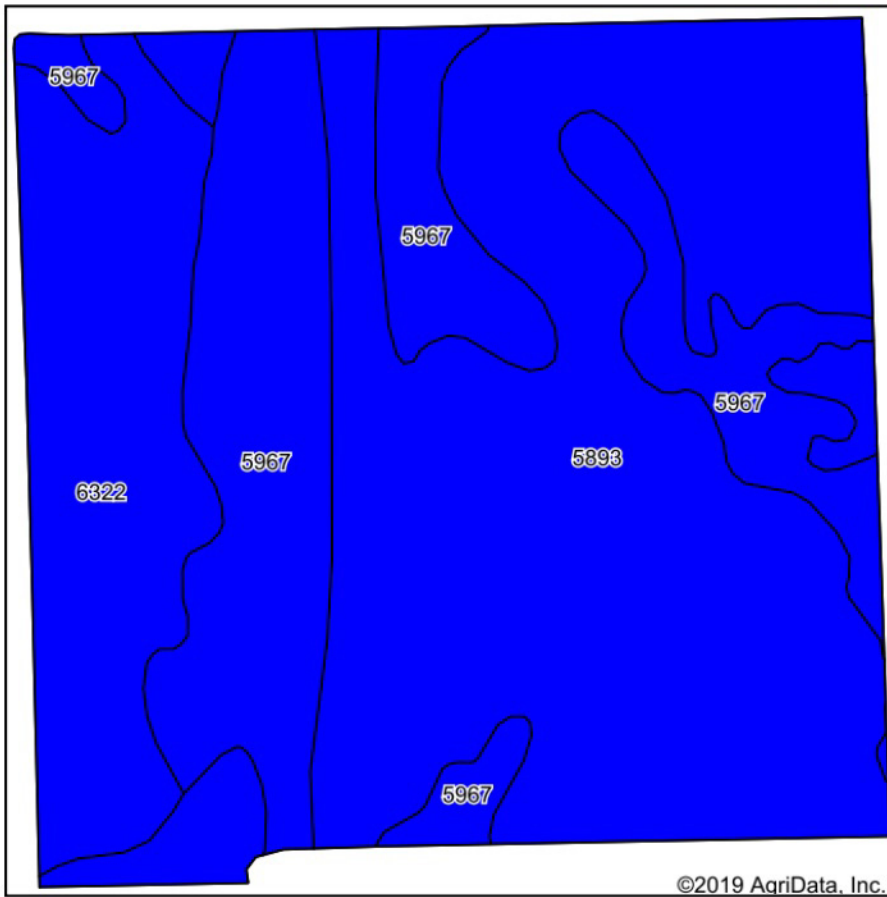
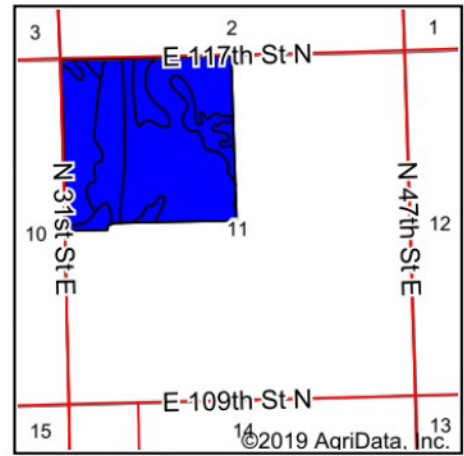


Soils Map



Soils data provided by USDA and NRCS.



State: **Kansas**
 County: **Sedgwick**
 Location: **11-25S-1E**
 Township: **Grant**
 Acres: **151.66**
 Date: **7/24/2019**



Maps Provided By:

 CUSTOMIZED ONLINE MAPPING
 © AgriData, Inc. 2019 www.AgriDataInc.com



Area Symbol: KS173, Soil Area Version: 14							
Code	Soil Description	Acres	Percent of field	Non-Irr Class Legend	Non-Irr Class *c	Irr Class *c	*n NCCPI Soybeans
5893	Farnum loam, 1 to 3 percent slopes	83.58	55.1%		IIc	Is	65
5967	Tabler silty clay loam, 0 to 1 percent slopes	41.49	27.4%		IIIs	IIIs	57
6322	Blanket silt loam, 0 to 1 percent slopes	26.59	17.5%		IIc	Is	64
Weighted Average							*n 62.6

*n: The aggregation method is "Weighted Average using major components"

*c: Using Capabilities Class Dominant Condition Aggregation Method

Soils data provided by USDA and NRCS.