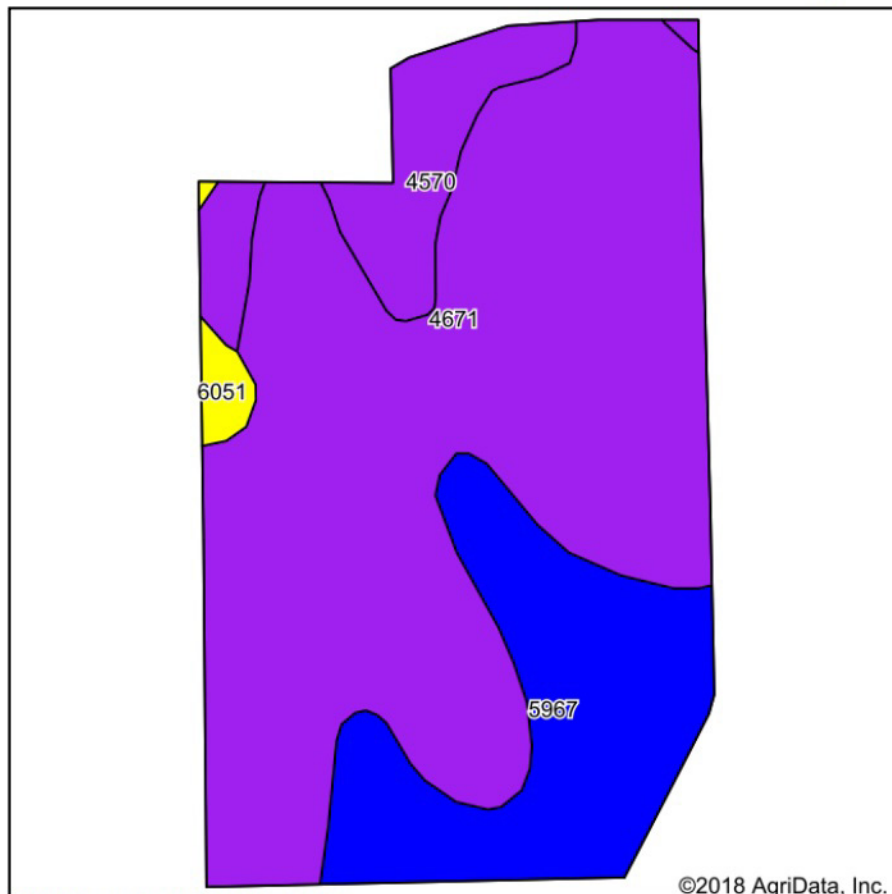
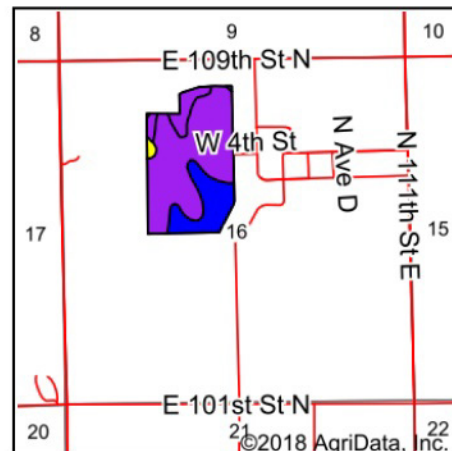


# Soils Map



Soils data provided by USDA and NRCS.



State: **Kansas**  
 County: **Sedgwick**  
 Location: **16-25S-2E**  
 Township: **Lincoln**  
 Acres: **60.24**  
 Date: **1/2/2019**



## Area Symbol: KS173, Soil Area Version: 14

Code	Soil Description	Acres	Percent of field	Non-Irr Class Legend	Non-Irr Class *c	Irr Class *c	*n NCCPI Soybeans
4671	Irwin silty clay loam, 1 to 3 percent slopes	41.11	68.2%		IIIs	IIIs	57
5967	Tabler silty clay loam, 0 to 1 percent slopes	12.88	21.4%		IIs	IIs	57
4570	Clime silty clay, 3 to 7 percent slopes	5.48	9.1%		IIIe	IIIe	33
6051	Elandco silt loam, frequently flooded	0.77	1.3%		Vw		46
Weighted Average							*n 54.7

\*n: The aggregation method is "Weighted Average using major components"

\*c: Using Capabilities Class Dominant Condition Aggregation Method

Soils data provided by USDA and NRCS.