

Common Land Unit

- Non-Cropland
- Cropland

- Tract Boundary
- PLSS

Wetland Determination Identifiers

- Restricted Use
- Limited Restrictions
- Exempt from Conservation Compliance Provisions

Unless noted on field:

- | | |
|-----------------------------|-----------------------|
| 1/ All Wheat HRW, NI, GR | 6/ Grass NAG, NI, FG |
| 2/ All Sorghum GRS, NI, GR | 7/ Grass NAG, NI, LS |
| 3/ All Corn YEL, NI, GR | 8/ Grass FTA, NI, GZ |
| 4/ All Soybeans COM, NI, GR | 9/ Grass FTA, NI, FG |
| 5/ Grass NAG, NI, GZ | 10/ Grass FTA, NI, LS |

Tract Cropland Total: 246.72 acres

2021 Program Year

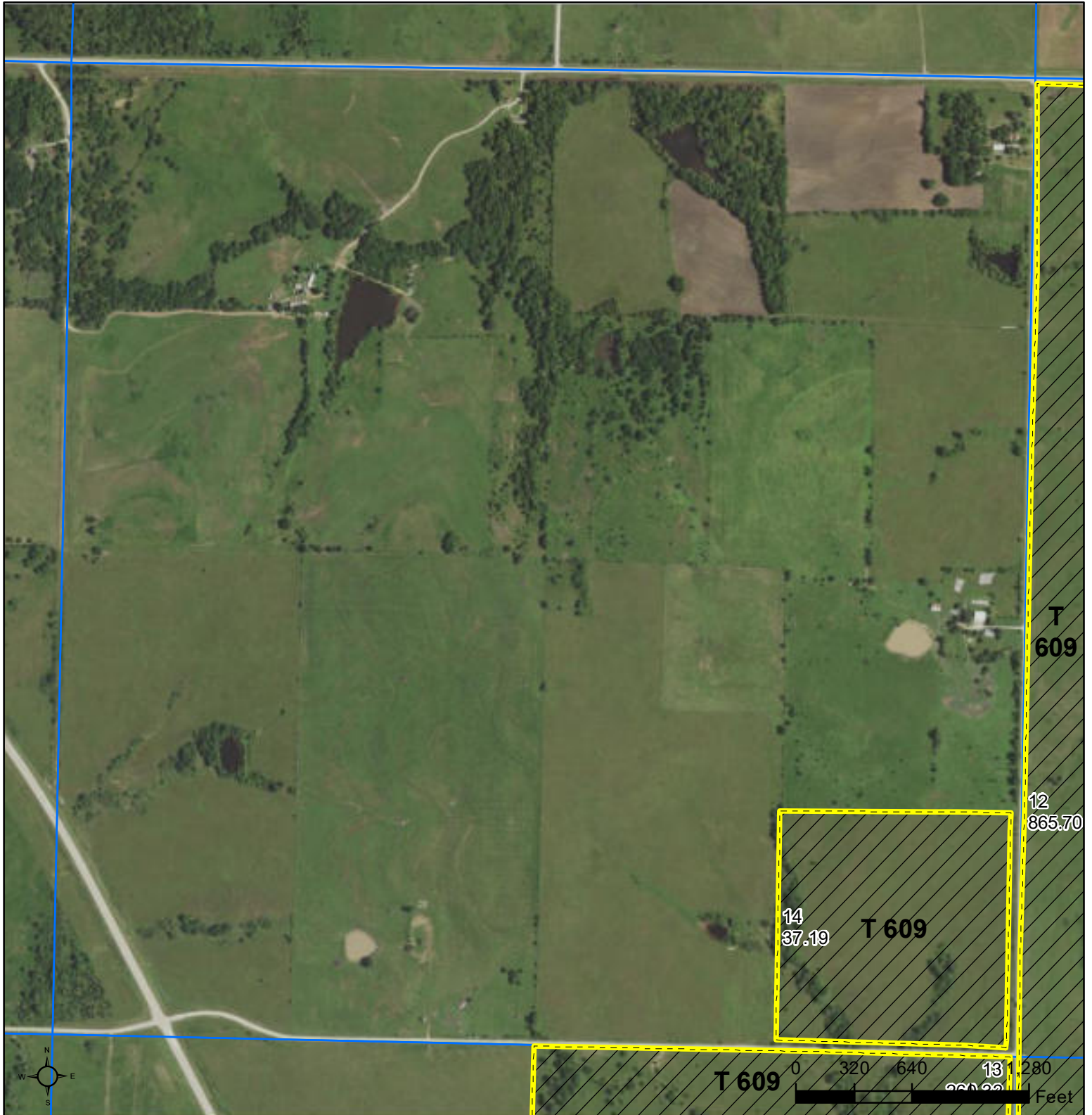
Map Created October 21, 2020

Farm 318
Tract 609

15-28-14

Displayed over 2019 NAIP

United States Department of Agriculture (USDA) Farm Service Agency (FSA) maps are for FSA Program administration only. This map does not represent a legal survey or reflect actual ownership; rather it depicts the information provided directly from the producer and/or National Agricultural Imagery Program (NAIP) imagery. The producer accepts the data 'as is' and assumes all risks associated with its use. USDA-FSA assumes no responsibility for actual or consequential damage incurred as a result of any user's reliance on this data outside FSA Programs. Wetland identifiers do not represent the size, shape, or specific determination of the area. Refer to your original determination (CPA-026 and attached maps) for exact boundaries and determinations or contact USDA Natural Resources Conservation Service (NRCS).



Common Land Unit PLSS

- Non-Cropland
- Tract Boundary

Wetland Determination Identifiers

- Restricted Use
- ▼ Limited Restrictions
- Exempt from Conservation
- Compliance Provisions

Unless noted on field:

- | | |
|-----------------------------|-----------------------|
| 1/ All Wheat HRW, NI, GR | 6/ Grass NAG, NI, FG |
| 2/ All Sorghum GRS, NI, GR | 7/ Grass NAG, NI, LS |
| 3/ All Corn YEL, NI GR | 8/ Grass FTA, NI, GZ |
| 4/ All Soybeans COM, NI, GR | 9/ Grass FTA, NI, FG |
| 5/ Grass NAG, NI, GZ | 10/ Grass FTA, NI, LS |

Tract Cropland Total: 246.72 acres

2021 Program Year

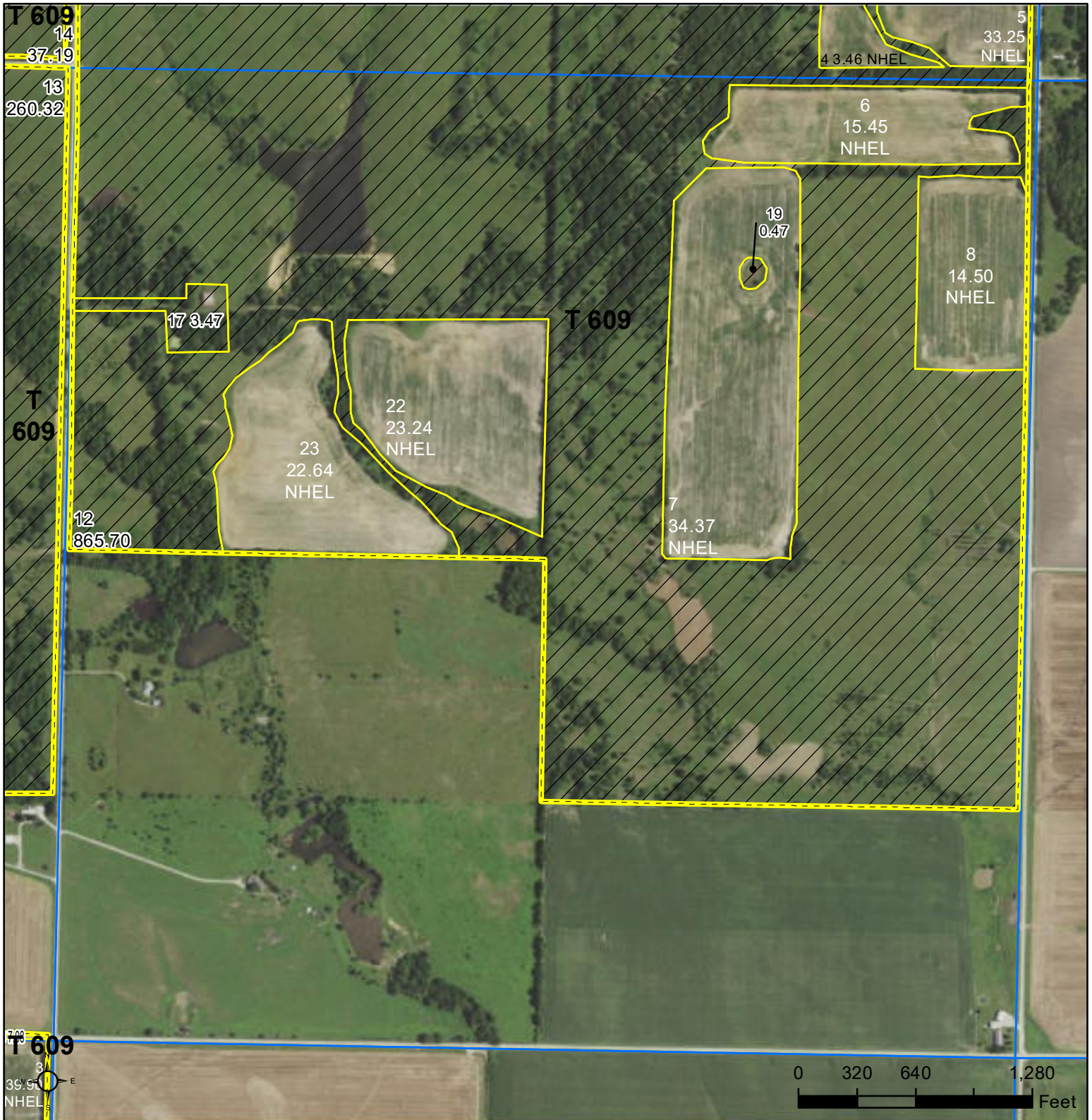
Map Created October 21, 2020

Farm 318
Tract 609

16-28-14

Displayed over 2019 NAIP

United States Department of Agriculture (USDA) Farm Service Agency (FSA) maps are for FSA Program administration only. This map does not represent a legal survey or reflect actual ownership; rather it depicts the information provided directly from the producer and/or National Agricultural Imagery Program (NAIP) imagery. The producer accepts the data 'as is' and assumes all risks associated with its use. USDA-FSA assumes no responsibility for actual or consequential damage incurred as a result of any user's reliance on this data outside FSA Programs. Wetland identifiers do not represent the size, shape, or specific determination of the area. Refer to your original determination (CPA-026 and attached maps) for exact boundaries and determinations or contact USDA Natural Resources Conservation Service (NRCS).



Common Land Unit

- Non-Cropland
- Cropland

- Tract Boundary
- PLSS

Wetland Determination Identifiers

- Restricted Use
- Limited Restrictions
- Exempt from Conservation Compliance Provisions

Unless noted on field:

- | | |
|-----------------------------|-----------------------|
| 1/ All Wheat HRW, NI, GR | 6/ Grass NAG, NI, FG |
| 2/ All Sorghum GRS, NI, GR | 7/ Grass NAG, NI, LS |
| 3/ All Corn YEL, NI, GR | 8/ Grass FTA, NI, GZ |
| 4/ All Soybeans COM, NI, GR | 9/ Grass FTA, NI, FG |
| 5/ Grass NAG, NI, GZ | 10/ Grass FTA, NI, LS |

Tract Cropland Total: 246.72 acres

2021 Program Year

Map Created October 21, 2020

Farm 318
Tract 609

22-28-14

Displayed over 2019 NAIP

United States Department of Agriculture (USDA) Farm Service Agency (FSA) maps are for FSA Program administration only. This map does not represent a legal survey or reflect actual ownership; rather it depicts the information provided directly from the producer and/or National Agricultural Imagery Program (NAIP) imagery. The producer accepts the data 'as is' and assumes all risks associated with its use. USDA-FSA assumes no responsibility for actual or consequential damage incurred as a result of any user's reliance on this data outside FSA Programs. Wetland identifiers do not represent the size, shape, or specific determination of the area. Refer to your original determination (CPA-026 and attached maps) for exact boundaries and determinations or contact USDA Natural Resources Conservation Service (NRCS).