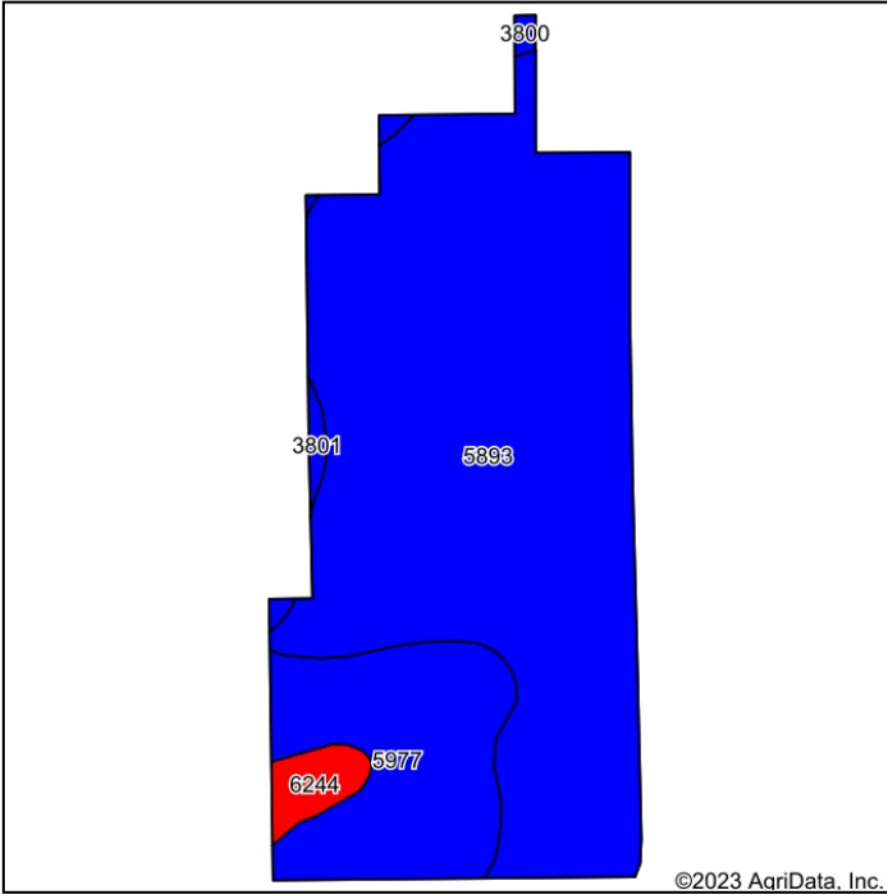
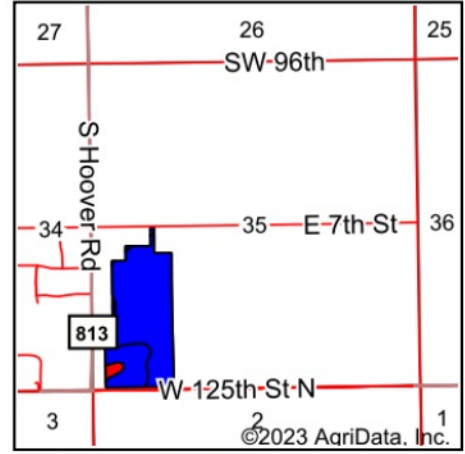


Soils Map



Soils data provided by USDA and NRCS.



State: **Kansas**
 County: **Harvey**
 Location: **35-24S-1W**
 Township: **Sedgwick**
 Acres: **51.74**
 Date: **2/7/2023**



Area Symbol: KS079, Soil Area Version: 19

Code	Soil Description	Acres	Percent of field	Non-Irr Class Legend	Non-Irr Class *c	Irr Class *c	*n NCCPI Soybeans
5893	Farnum loam, 1 to 3 percent slopes	40.15	77.6%		IIc	Is	63
5977	Vanoss silt loam, 1 to 3 percent slopes	9.61	18.6%		IIe	IIe	72
6244	Elandco silt loam, rarely flooded	1.25	2.4%		Ie	Ie	75
3801	Crete silt loam, 1 to 3 percent slopes, loess plains and breaks	0.42	0.8%		IIe	IIe	65
3800	Crete silt loam, 0 to 1 percent slopes, loess plains and breaks	0.31	0.6%		IIIs	IIIs	66
Weighted Average					1.98	1.20	*n 65

*n: The aggregation method is "Weighted Average using all components"

*c: Using Capabilities Class Dominant Condition Aggregation Method