

Common Land Unit PLSS

- Cropland
- Tract Boundary

Wetland Determination Identifiers

- Restricted Use
- ▼ Limited Restrictions
- Exempt from Conservation Compliance Provisions

Unless noted on field:

- | | |
|-----------------------------|--------------------------------|
| 1/ All Wheat HRW, NI, GR | 6/ Grass SMO, NI, FG |
| 2/ All Sorghum GRS, NI, GR | 7/ Alfalfa, NI, FG |
| 3/ All Corn YEL, NI GR | 8/ Sorghum Forage Cane, NI, FG |
| 4/ All Soybeans COM, NI, GR | 9/ Cotton, NI, GR |
| 5/ Grass NAG, NI, GZ | |

Tract Cropland Total: 71.92 acres

2023 Program Year

Map Created October 27, 2022

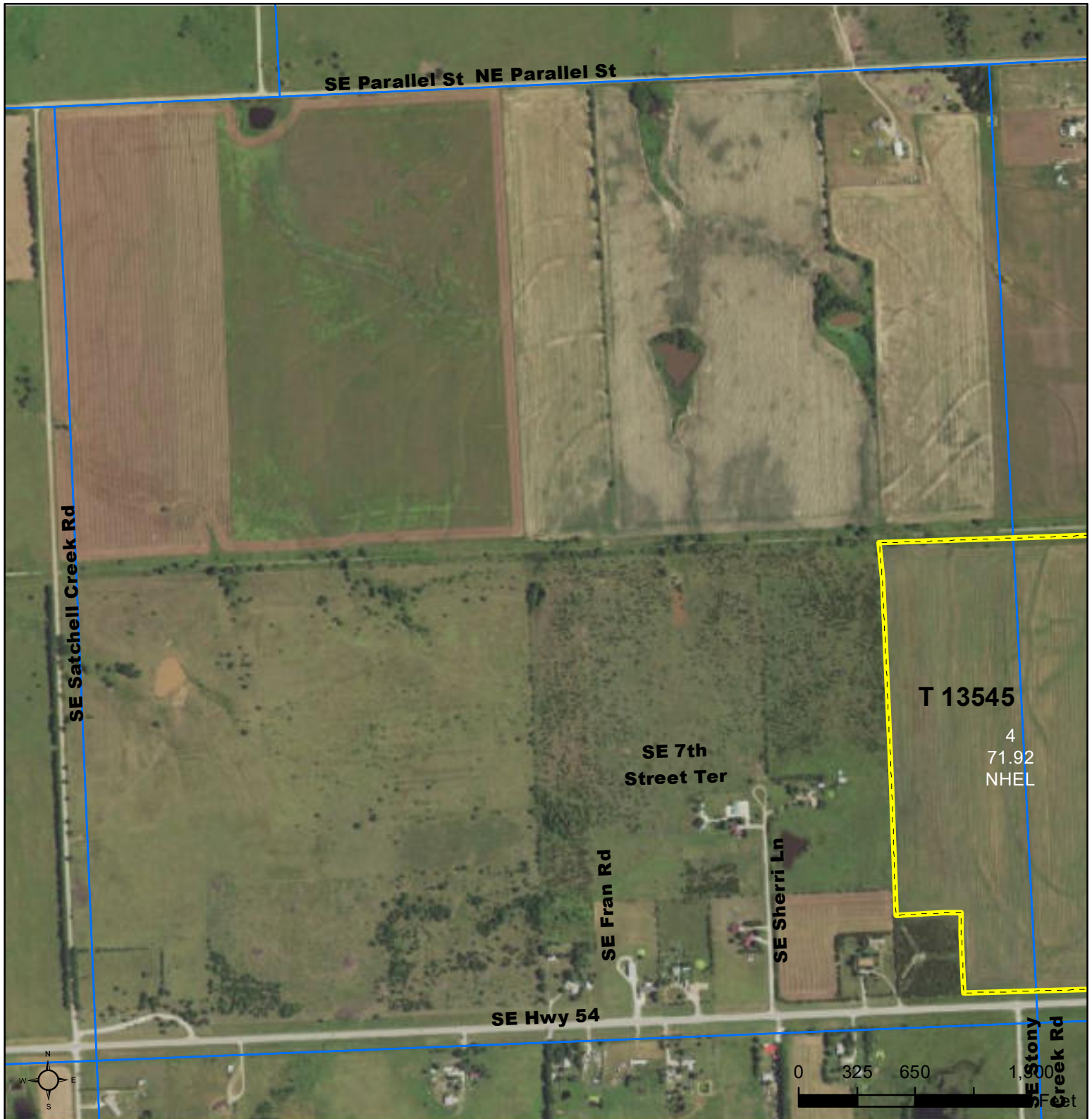
Farm 10604

Tract 13545

2-26-7

Displayed over 2021 NAIP

United States Department of Agriculture (USDA) Farm Service Agency (FSA) maps are for FSA Program administration only. This map does not represent a legal survey or reflect actual ownership; rather it depicts the information provided directly from the producer and/or National Agricultural Imagery Program (NAIP) imagery. The producer accepts the data 'as is' and assumes all risks associated with its use. USDA-FSA assumes no responsibility for actual or consequential damage incurred as a result of any user's reliance on this data outside FSA Programs. Wetland identifiers do not represent the size, shape, or specific determination of the area. Refer to your original determination (CPA-026 and attached maps) for exact boundaries and determinations or contact USDA Natural Resources Conservation Service (NRCS).



T 13545

4
71.92
NHSL

SE 7th
Street Ter

SE Fran Rd

SE Sherri Ln

SE Hwy 54

SE Stony
Creek Rd

0 325 650 1,300
Feet

Common Land Unit PLSS

- Cropland
- Tract Boundary

Wetland Determination Identifiers

- Restricted Use
- ▼ Limited Restrictions
- Exempt from Conservation Compliance Provisions

Unless noted on field:

- | | |
|-----------------------------|--------------------------------|
| 1/ All Wheat HRW, NI, GR | 6/ Grass SMO, NI, FG |
| 2/ All Sorghum GRS, NI, GR | 7/ Alfalfa, NI, FG |
| 3/ All Corn YEL, NI GR | 8/ Sorghum Forage Cane, NI, FG |
| 4/ All Soybeans COM, NI, GR | 9/ Cotton, NI, GR |
| 5/ Grass NAG, NI, GZ | |

Tract Cropland Total: 71.92 acres

2023 Program Year

Map Created October 27, 2022

Farm 10604

Tract 13545

3-26-7

Displayed over 2021 NAIP

United States Department of Agriculture (USDA) Farm Service Agency (FSA) maps are for FSA Program administration only. This map does not represent a legal survey or reflect actual ownership; rather it depicts the information provided directly from the producer and/or National Agricultural Imagery Program (NAIP) imagery. The producer accepts the data 'as is' and assumes all risks associated with its use. USDA-FSA assumes no responsibility for actual or consequential damage incurred as a result of any user's reliance on this data outside FSA Programs. Wetland identifiers do not represent the size, shape, or specific determination of the area. Refer to your original determination (CPA-026 and attached maps) for exact boundaries and determinations or contact USDA Natural Resources Conservation Service (NRCS).