

**Common Land Unit**

- Tract Boundary
- PLSS
- Non-Cropland
- Cropland

**Wetland Determination Identifiers**

- Restricted Use
- Limited Restrictions
- Exempt from Conservation Compliance Provisions

Unless noted on field:

- |                             |                                |
|-----------------------------|--------------------------------|
| 1/ All Wheat HRW, NI, GR    | 6/ Grass SMO, NI, FG           |
| 2/ All Sorghum GRS, NI, GR  | 7/ Alfalfa, NI, FG             |
| 3/ All Corn YEL, NI, GR     | 8/ Sorghum Forage Cane, NI, FG |
| 4/ All Soybeans COM, NI, GR | 9/ Cotton, NI, GR              |
| 5/ Grass NAG, NI, GZ        |                                |

**2023 Program Year**  
Map Created November 20, 2022

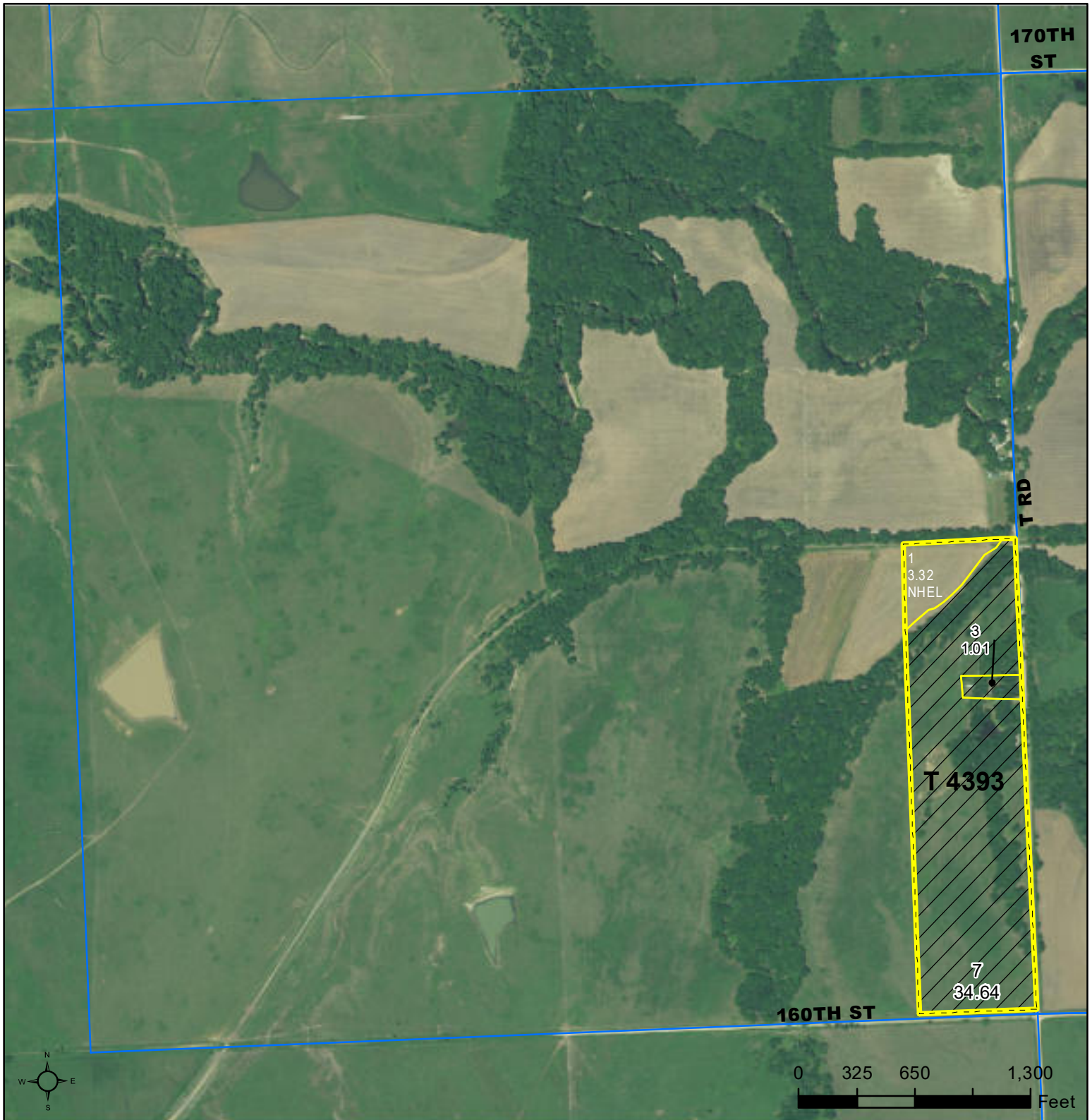
**Farm 4451**  
**Tract 4392**

**Tract Cropland Total: 10.20 acres**

**29-25-11**

Displayed over 2021 NAIP

United States Department of Agriculture (USDA) Farm Service Agency (FSA) maps are for FSA Program administration only. This map does not represent a legal survey or reflect actual ownership; rather it depicts the information provided directly from the producer and/or National Agricultural Imagery Program (NAIP) imagery. The producer accepts the data 'as is' and assumes all risks associated with its use. USDA-FSA assumes no responsibility for actual or consequential damage incurred as a result of any user's reliance on this data outside FSA Programs. Wetland identifiers do not represent the size, shape, or specific determination of the area. Refer to your original determination (CPA-026 and attached maps) for exact boundaries and determinations or contact USDA Natural Resources Conservation Service (NRCS).



**Common Land Unit** Tract Boundary PLSS

Non-Cropland  
 Cropland

**Wetland Determination Identifiers**

- Restricted Use
- Limited Restrictions
- Exempt from Conservation Compliance Provisions

**Unless noted on field:**

- |                             |                                |
|-----------------------------|--------------------------------|
| 1/ All Wheat HRW, NI, GR    | 6/ Grass SMO, NI, FG           |
| 2/ All Sorghum GRS, NI, GR  | 7/ Alfalfa, NI, FG             |
| 3/ All Corn YEL, NI, GR     | 8/ Sorghum Forage Cane, NI, FG |
| 4/ All Soybeans COM, NI, GR | 9/ Cotton, NI, GR              |
| 5/ Grass NAG, NI, GZ        |                                |

**Tract Cropland Total: 3.32 acres**

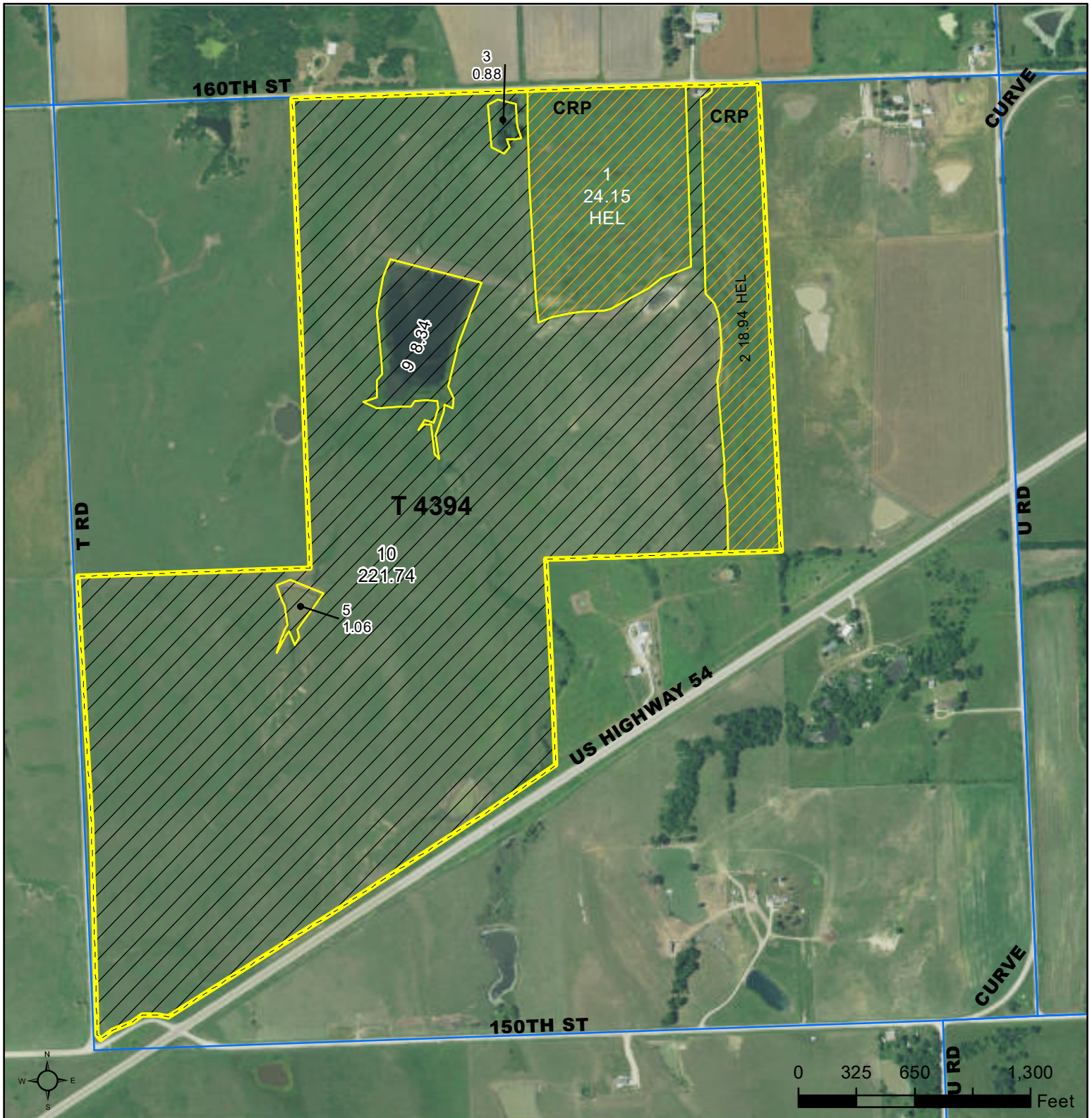
**2023 Program Year**  
 Map Created November 20, 2022

**Farm 4454**  
**Tract 4393**

**29-25-11**

Displayed over 2021 NAIP

United States Department of Agriculture (USDA) Farm Service Agency (FSA) maps are for FSA Program administration only. This map does not represent a legal survey or reflect actual ownership; rather it depicts the information provided directly from the producer and/or National Agricultural Imagery Program (NAIP) imagery. The producer accepts the data 'as is' and assumes all risks associated with its use. USDA-FSA assumes no responsibility for actual or consequential damage incurred as a result of any user's reliance on this data outside FSA Programs. Wetland identifiers do not represent the size, shape, or specific determination of the area. Refer to your original determination (CPA-026 and attached maps) for exact boundaries and determinations or contact USDA Natural Resources Conservation Service (NRCS).



**Common Land Unit**

- Non-Cropland
- Cropland

- CRP
- Tract Boundary
- PLSS

**Wetland Determination Identifiers**

- Restricted Use
- Limited Restrictions
- Exempt from Conservation Compliance Provisions

**Unless noted on field:**

- |                             |                                |
|-----------------------------|--------------------------------|
| 1/ All Wheat HRW, NI, GR    | 6/ Grass SMO, NI, FG           |
| 2/ All Sorghum GRS, NI, GR  | 7/ Alfalfa, NI, FG             |
| 3/ All Corn YEL, NI, GR     | 8/ Sorghum Forage Cane, NI, FG |
| 4/ All Soybeans COM, NI, GR | 9/ Cotton, NI, GR              |
| 5/ Grass NAG, NI, GZ        |                                |

Tract Cropland Total: 43.09 acres

2023 Program Year

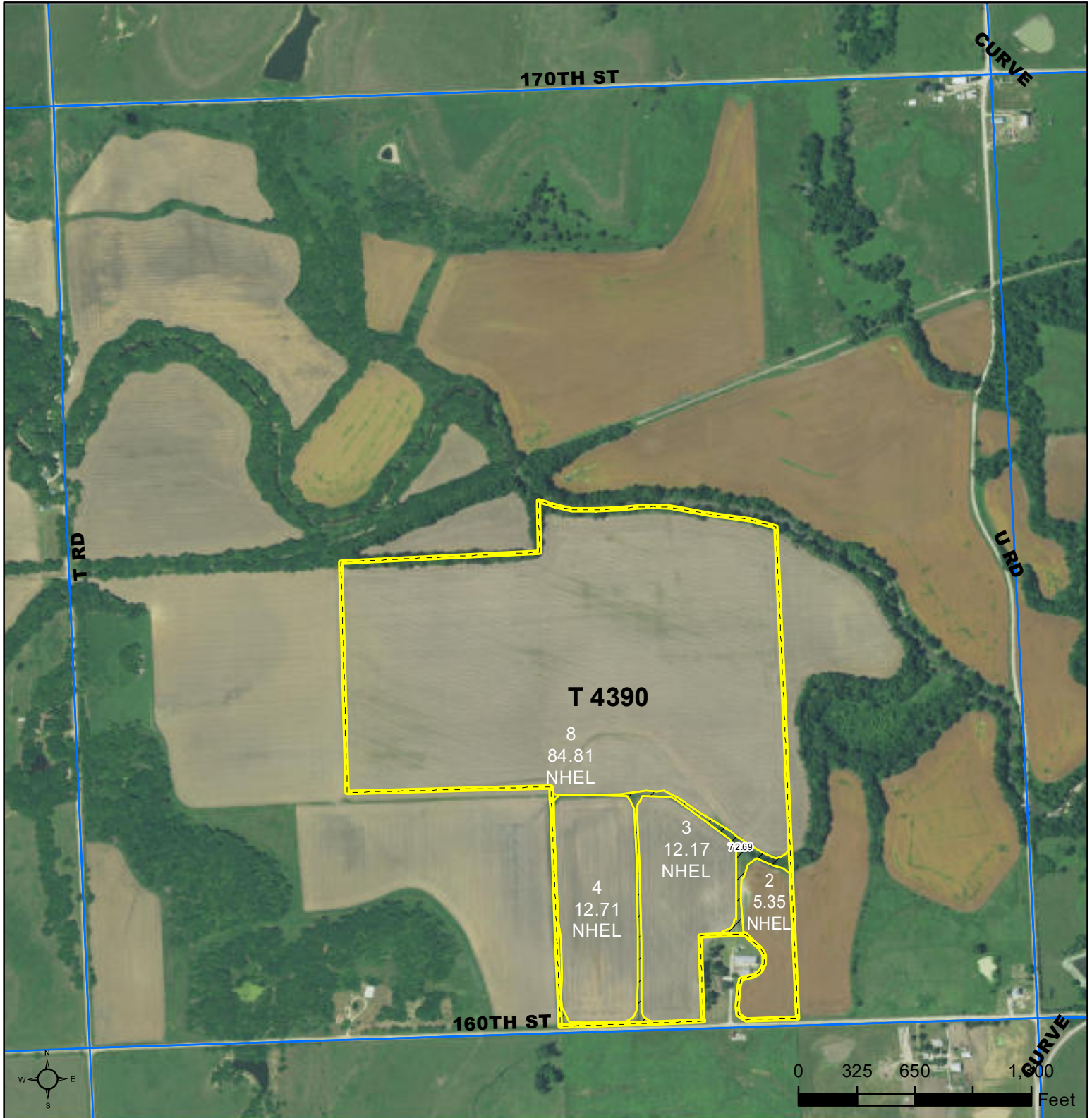
Map Created November 20, 2022

Farm **4451**  
Tract **4394**

**33-25-11**

Displayed over 2021 NAIP

United States Department of Agriculture (USDA) Farm Service Agency (FSA) maps are for FSA Program administration only. This map does not represent a legal survey or reflect actual ownership; rather it depicts the information provided directly from the producer and/or National Agricultural Imagery Program (NAIP) imagery. The producer accepts the data 'as is' and assumes all risks associated with its use. USDA-FSA assumes no responsibility for actual or consequential damage incurred as a result of any user's reliance on this data outside FSA Programs. Wetland identifiers do not represent the size, shape, or specific determination of the area. Refer to your original determination (CPA-026 and attached maps) for exact boundaries and determinations or contact USDA Natural Resources Conservation Service (NRCS).



**Common Land Unit**  
 Tract Boundary  
 PLSS  
 Non-Cropland  
 Cropland

**Wetland Determination Identifiers**  
 Restricted Use  
 Limited Restrictions  
 Exempt from Conservation Compliance Provisions

Unless noted on field:

- |                             |                                |
|-----------------------------|--------------------------------|
| 1/ All Wheat HRW, NI, GR    | 6/ Grass SMO, NI, FG           |
| 2/ All Sorghum GRS, NI, GR  | 7/ Alfalfa, NI, FG             |
| 3/ All Corn YEL, NI, GR     | 8/ Sorghum Forage Cane, NI, FG |
| 4/ All Soybeans COM, NI, GR | 9/ Cotton, NI, GR              |
| 5/ Grass NAG, NI, GZ        |                                |

Tract Cropland Total: 115.04 acres

2023 Program Year  
 Map Created November 20, 2022

Farm 4451  
 Tract 4390

28-25-11

Displayed over 2021 NAIP

United States Department of Agriculture (USDA) Farm Service Agency (FSA) maps are for FSA Program administration only. This map does not represent a legal survey or reflect actual ownership; rather it depicts the information provided directly from the producer and/or National Agricultural Imagery Program (NAIP) imagery. The producer accepts the data 'as is' and assumes all risks associated with its use. USDA-FSA assumes no responsibility for actual or consequential damage incurred as a result of any user's reliance on this data outside FSA Programs. Wetland identifiers do not represent the size, shape, or specific determination of the area. Refer to your original determination (CPA-026 and attached maps) for exact boundaries and determinations or contact USDA Natural Resources Conservation Service (NRCS).