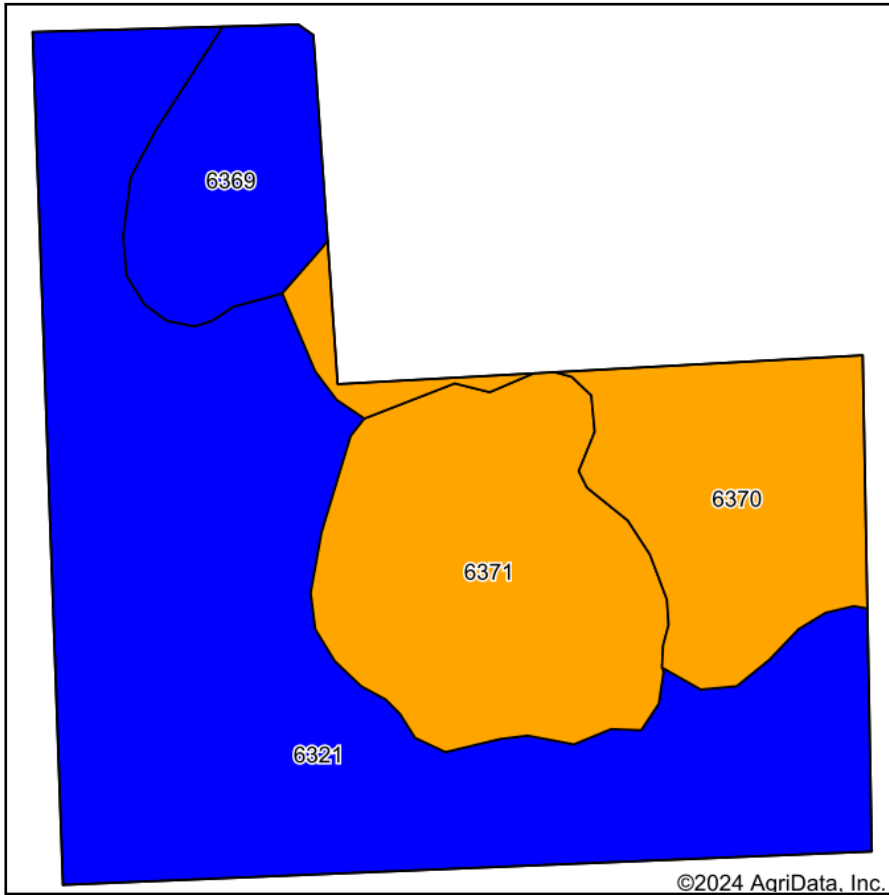
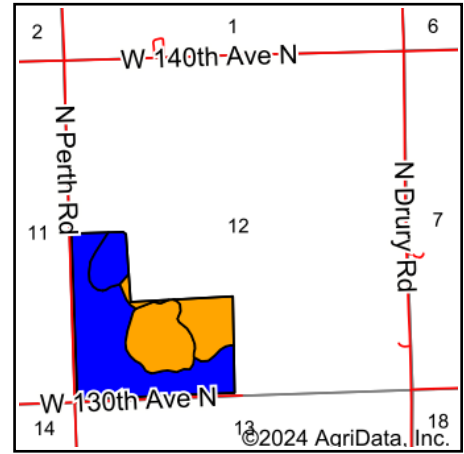


Soils Map



Soils data provided by USDA and NRCS.



State: **Kansas**
 County: **Sumner**
 Location: **12-30S-2W**
 Township: **Illinois**
 Acres: **103.36**
 Date: **2/23/2024**



Area Symbol: KS191, Soil Area Version: 20

Code	Soil Description	Acres	Percent of field	Non-Irr Class Legend	Non-Irr Class *c	Irr Class *c	Range Production (lbs/acre/yr)	Alfalfa hay Irrigated Tons	Barley Bu	Corn Bu	Corn Irrigated Bu	Cotton lint Lbs	Grain sorghum Bu	Grain sorghum Irrigated Bu	Improved bermudagrass AUM	Int blu AU
6321	Bethany silt loam, 1 to 3 percent slopes	56.90	55.1%		Ile	Ile	4633		2			302	44			5
6371	Milan loam, 3 to 6 percent slopes, eroded	20.86	20.2%		IIle		3960						40			
6370	Milan loam, 3 to 6 percent slopes	16.13	15.6%		IIle		3960						45			
6369	Milan loam, 1 to 3 percent slopes	9.47	9.2%		Ile	Ile	3960	7		59	149		50	109		
Weighted Average					2.36	*-	4330.5	0.6	1.1	5.4	13.7	166.3	43.9	10		2.8

*n: The aggregation method is "Weighted Average using all components"

*c: Using Capabilities Class Dominant Condition Aggregation Method

*- Irr Class weighted average cannot be calculated on the current soils data due to missing data.

Soils data provided by USDA and NRCS.