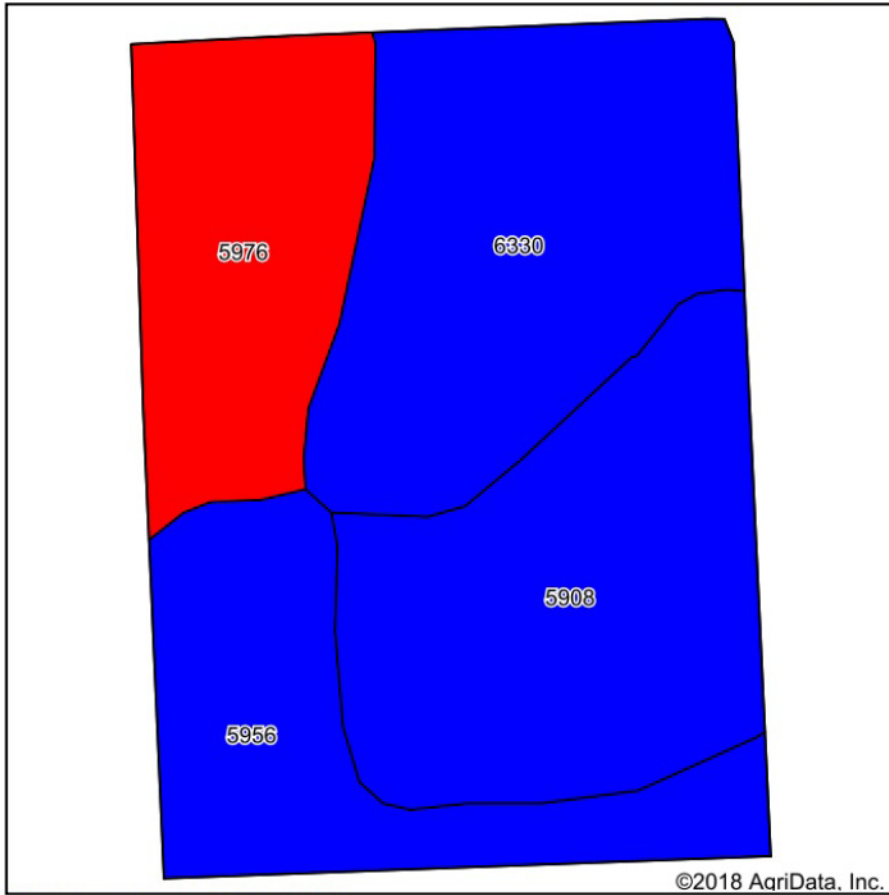
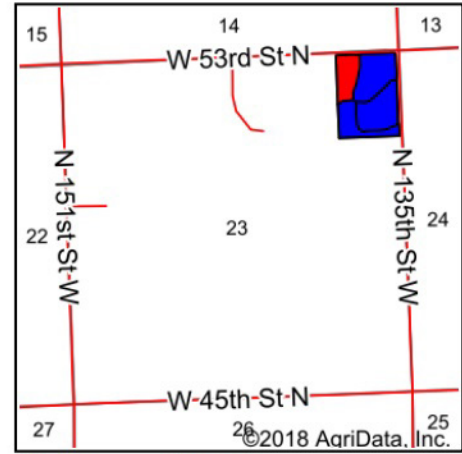


# Soils Map



Soils data provided by USDA and NRCS.



State: **Kansas**  
 County: **Sedgwick**  
 Location: **23-26S-2W**  
 Township: **Union**  
 Acres: **27.85**  
 Date: **9/25/2018**



## Area Symbol: KS173, Soil Area Version: 13

Code	Soil Description	Acres	Percent of field	Non-Irr Class Legend	Non-Irr Class *c	Irr Class *c	NCCPI Soybeans
6330	Carwile fine sandy loam, 0 to 1 percent slopes	8.61	30.9%		llw	llw	55
5908	Nalim loam, 0 to 1 percent slopes	8.41	30.2%		llc	l	70
5956	Shellabarger sandy loam, 1 to 3 percent slopes	5.53	19.9%		lle	lle	52
5976	Vanoss silt loam, 0 to 1 percent slopes	5.30	19.0%		lc	ls	71
<b>Weighted Average</b>							<b>62</b>

\*c: Using Capabilities Class Dominant Condition Aggregation Method

Soils data provided by USDA and NRCS.