

Kansas  
Sedgwick

U.S. Department of Agriculture  
Farm Service Agency

FARM: 740  
Prepared: 10/26/17 2:11 PM  
Crop Year: 2018  
Page: 1 of 1

Report ID: FSA-156EZ

Abbreviated 156 Farm Record

DISCLAIMER: This is data extracted from the web farm database. Because of potential messaging failures in MIDAS, this data is not guaranteed to be an accurate and complete representation of data contained in the MIDAS system, which is the system of record for Farm Records.

Operator Name	Farm Identifier	Recon Number
---------------	-----------------	--------------

Farms Associated with Operator:

CRP Contract Number(s): None

Farmland	Cropland	DCP Cropland	WBP	WRP/EWP	CRP Cropland	GRP	Farm Status	Number of Tracts
95.47	79.15	79.15	0.0	0.0	0.0	0.0	Active	1
State Conservation	Other Conservation	Effective DCP Cropland	Double Cropped	MPL/FWP				
0.0	0.0	79.15	0.0	0.0				

ARC/PLC			
ARC-IC NONE	ARC-CO WHEAT, SORGH, SOYBN	PLC NONE	PLC-Default NONE

Crop	Base Acreage	CTAP Tran Yield	PLC Yield	CCC-505 CRP Reduction
WHEAT	28.2		29	0.0
GRAIN SORGHUM	40.4		34	0.0
SOYBEANS	1.4		33	0.0
Total Base Acres:	70.0			

Tract Number: 2913      Description: S-3/ S2SW4 17-25-2E W2S2SE4 17-25-2E

BIA Range Unit Number:

HEL Status: HEL: conservation system is being actively applied

Wetland Status: Tract does not contain a wetland

WL Violations: None

Farmland	Cropland	DCP Cropland	WBP	WRP/EWP	CRP Cropland	GRP
95.47	79.15	79.15	0.0	0.0	0.0	0.0
State Conservation	Other Conservation	Effective DCP Cropland	Double Cropped	MPL/FWP		
0.0	0.0	79.15	0.0	0.0		

Crop	Base Acreage	CTAP Tran Yield	PLC Yield	CCC-505 CRP Reduction
WHEAT	28.2		29	0.0
GRAIN SORGHUM	40.4		34	0.0
SOYBEANS	1.4		33	0.0
Total Base Acres:	70.0			

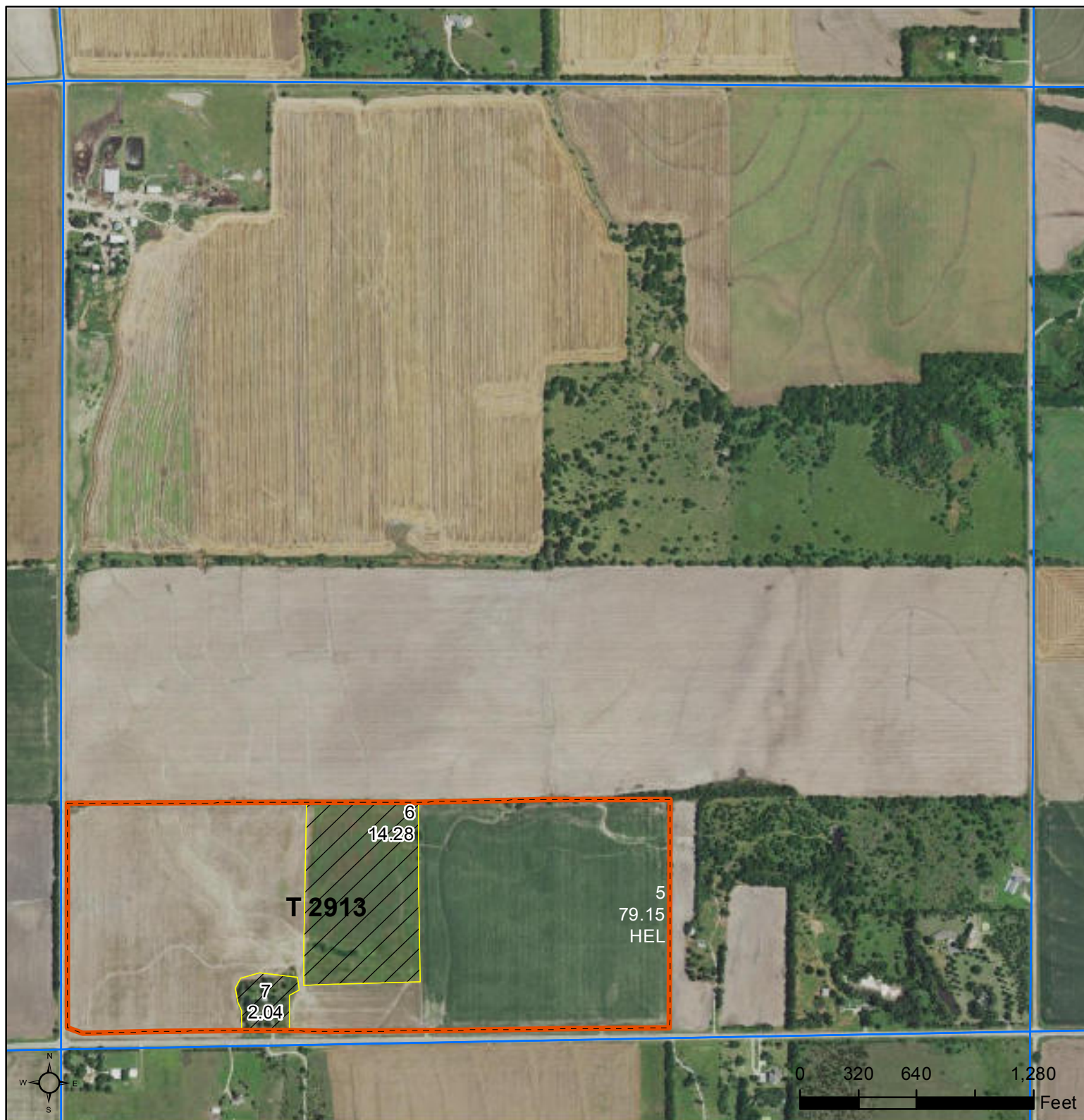
Owners: GENEVA I POTTER

Other Producers: None



United States  
Department of  
Agriculture

## Sedgwick County, Kansas



**Common Land Unit**  
[Orange outline] Tract Boundary  
[Blue outline] PLSS  
[Green hatched] Non-Cropland  
[Yellow hatched] Cropland

### Wetland Determination Identifiers

- Restricted Use
- ▼ Limited Restrictions
- Exempt from Conservation Compliance Provisions

Tract Cropland Total: 79.15 acres

Displayed over 2015 NAIP

2017 Program Year  
Map Created August 09, 2016

**Farm 740**  
**Tract 2913**  
**17-25-2E**

United States Department of Agriculture (USDA) Farm Service Agency (FSA) maps are for FSA Program administration only. This map does not represent a legal survey or reflect actual ownership; rather it depicts the information provided directly from the producer and/or National Agricultural Imagery Program (NAIP) imagery. The producer accepts the data 'as is' and assumes all risks associated with its use. USDA-FSA assumes no responsibility for actual or consequential damage incurred as a result of any user's reliance on this data outside FSA Programs. Wetland identifiers do not represent the size, shape, or specific determination of the area. Refer to your original determination (CPA-026 and attached maps) for exact boundaries and determinations or contact USDA Natural Resources Conservation Service (NRCS).