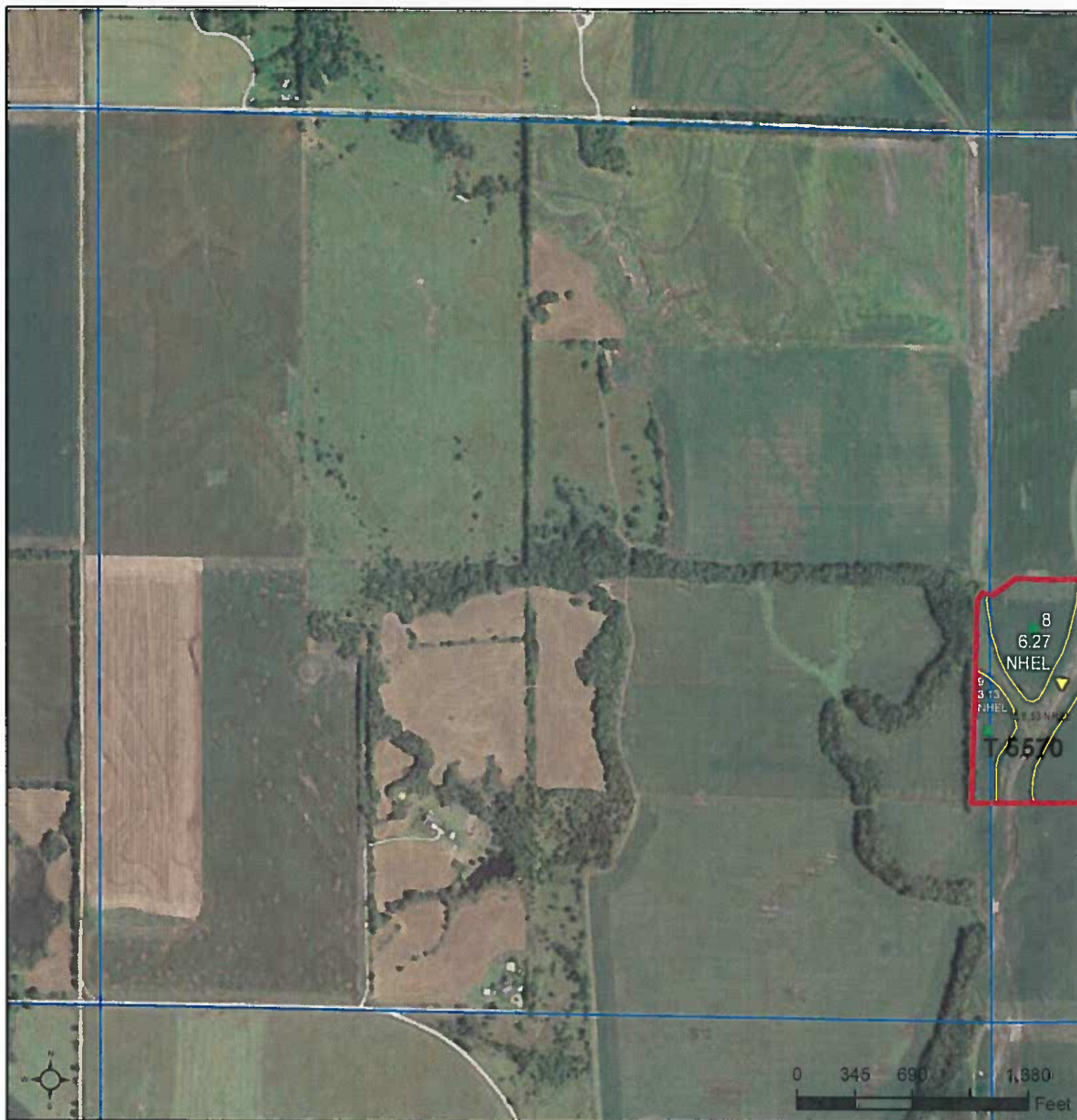




United States
Department of
Agriculture

Butler County, Kansas



Common Land Unit PLSS

- Cropland
- Tract Boundary

Wetland Determination Identifiers

- Restricted Use
- Limited Restrictions
- Exempt from Conservation Compliance Provisions

Unless noted on field:

- | | |
|-----------------------------|----------------------|
| 1/ All Wheat HRW, NI, GR | 5/ Grass NAG, NI, FG |
| 2/ All Sorghum GRS, NI, GR | 6/ Grass NAG, NI, LS |
| 3/ All Corn YEL, NI, GR | 7/ Grass FTA, NI, FG |
| 4/ All Soybeans COM, NI, GR | 8/ Grass FTA, NI, LS |

2018 Program Year

Map Created December 02, 2017

Farm 7746

Tract 5570

13-24-3

Tract Cropland Total: 211.96 acres

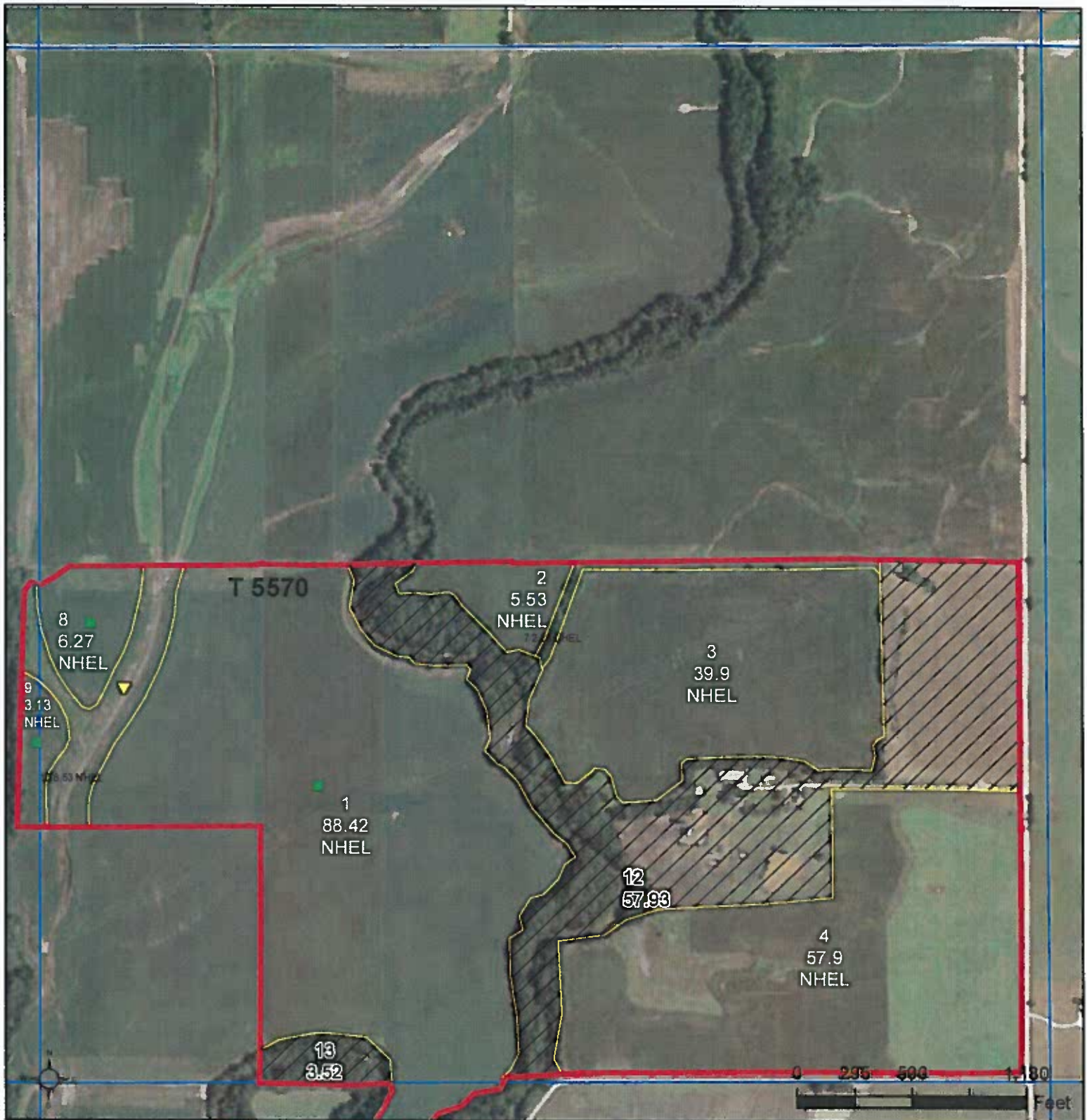
Displayed over 2015 NAIP

United States Department of Agriculture (USDA) Farm Service Agency (FSA) maps are for FSA Program administration only. This map does not represent a legal survey or reflect actual ownership; rather it depicts the information provided directly from the producer and/or National Agricultural Imagery Program (NAIP) imagery. The producer accepts the data 'as is' and assumes all risks associated with its use. USDA-FSA assumes no responsibility for actual or consequential damage incurred as a result of any user's reliance on this data outside FSA Programs. Wetland identifiers do not represent the size, shape, or specific determination of the area. Refer to your original determination (CPA-026 and attached maps) for exact boundaries and determinations or contact USDA Natural Resources Conservation Service (NRCS).



United States
Department of
Agriculture

Butler County, Kansas



Common Land Unit

- Non-Cropland
- Cropland

Wetland Determination Identifiers

- Restricted Use
- Limited Restrictions
- Exempt from Conservation Compliance Provisions

- Tract Boundary
- PLSS

Unless noted on field:

- | | |
|-----------------------------|----------------------|
| 1/ All Wheat HRW, NI, GR | 5/ Grass NAG, NI, FG |
| 2/ All Sorghum GRS, NI, GR | 6/ Grass NAG, NI, LS |
| 3/ All Corn YEL, NI, GR | 7/ Grass FTA, NI, FG |
| 4/ All Soybeans COM, NI, GR | 8/ Grass FTA, NI, LS |

2018 Program Year

Map Created December 02, 2017

Farm 7746

Tract 5570

18-24-4

Tract Cropland Total: 211.96 acres

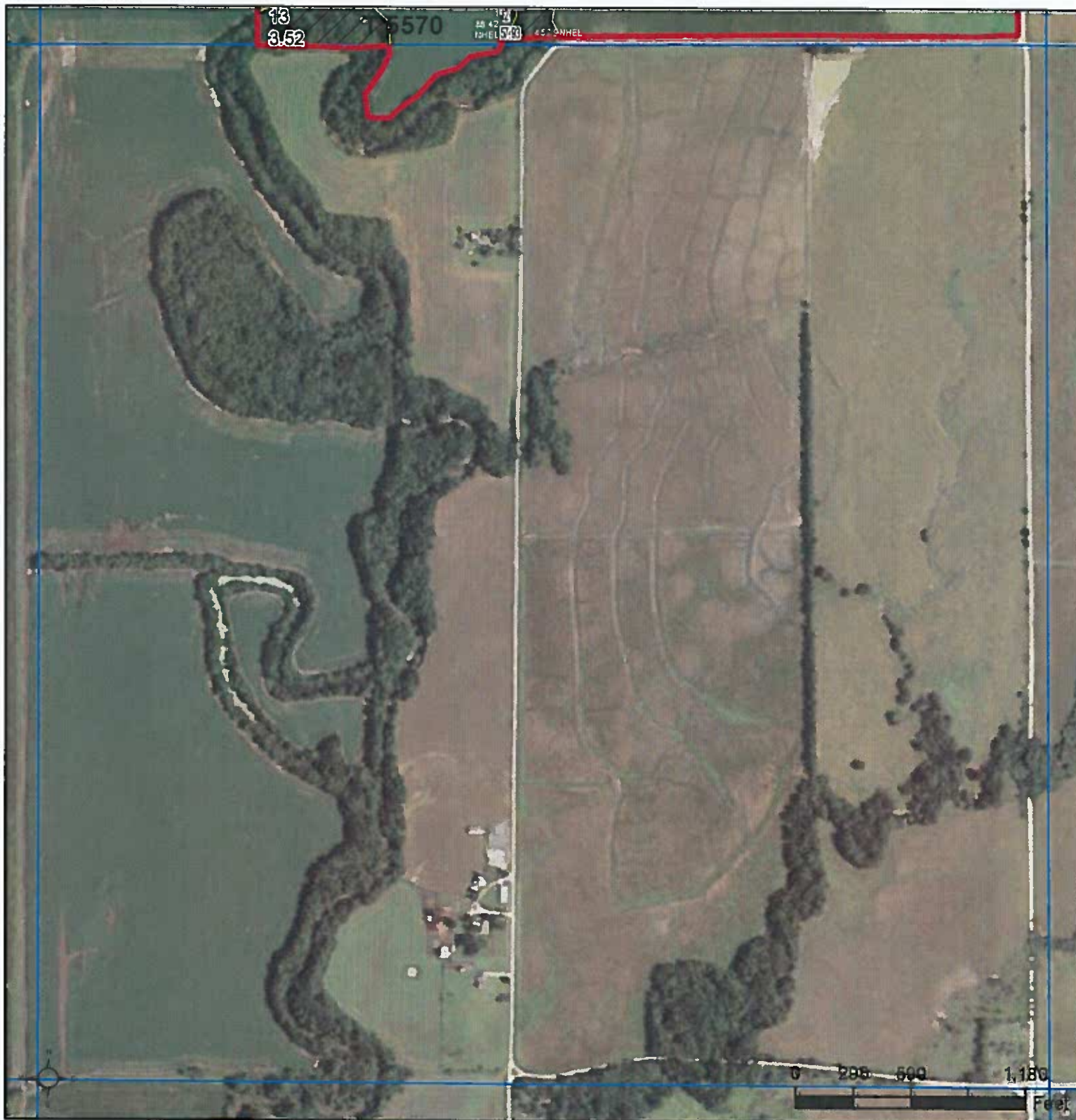
Displayed over 2015 NAIP

United States Department of Agriculture (USDA) Farm Service Agency (FSA) maps are for FSA Program administration only. This map does not represent a legal survey or reflect actual ownership; rather it depicts the information provided directly from the producer and/or National Agricultural Imagery Program (NAIP) imagery. The producer accepts the data 'as is' and assumes all risks associated with its use. USDA-FSA assumes no responsibility for actual or consequential damage incurred as a result of any user's reliance on this data outside FSA Programs. Wetland identifiers do not represent the size, shape, or specific determination of the area. Refer to your original determination (CPA-026 and attached maps) for exact boundaries and determinations or contact USDA Natural Resources Conservation Service (NRCS).



United States
Department of
Agriculture

Butler County, Kansas



Common Land Unit

Tract Boundary
PLSS

Non-Cropland
Cropland

Wetland Determination Identifiers

- Restricted Use
- Limited Restrictions
- Exempt from Conservation Compliance Provisions

Unless noted on field:

- | | |
|-----------------------------|----------------------|
| 1/ All Wheat HRW, NI, GR | 5/ Grass NAG, NI, FG |
| 2/ All Sorghum GRS, NI, GR | 6/ Grass NAG, NI, LS |
| 3/ All Corn YEL, NI, GR | 7/ Grass FTA, NI, FG |
| 4/ All Soybeans COM, NI, GR | 8/ Grass FTA, NI, LS |

2018 Program Year

Map Created December 02, 2017

Farm 7746

Tract 5570

19-24-4

Tract Cropland Total: 211.96 acres

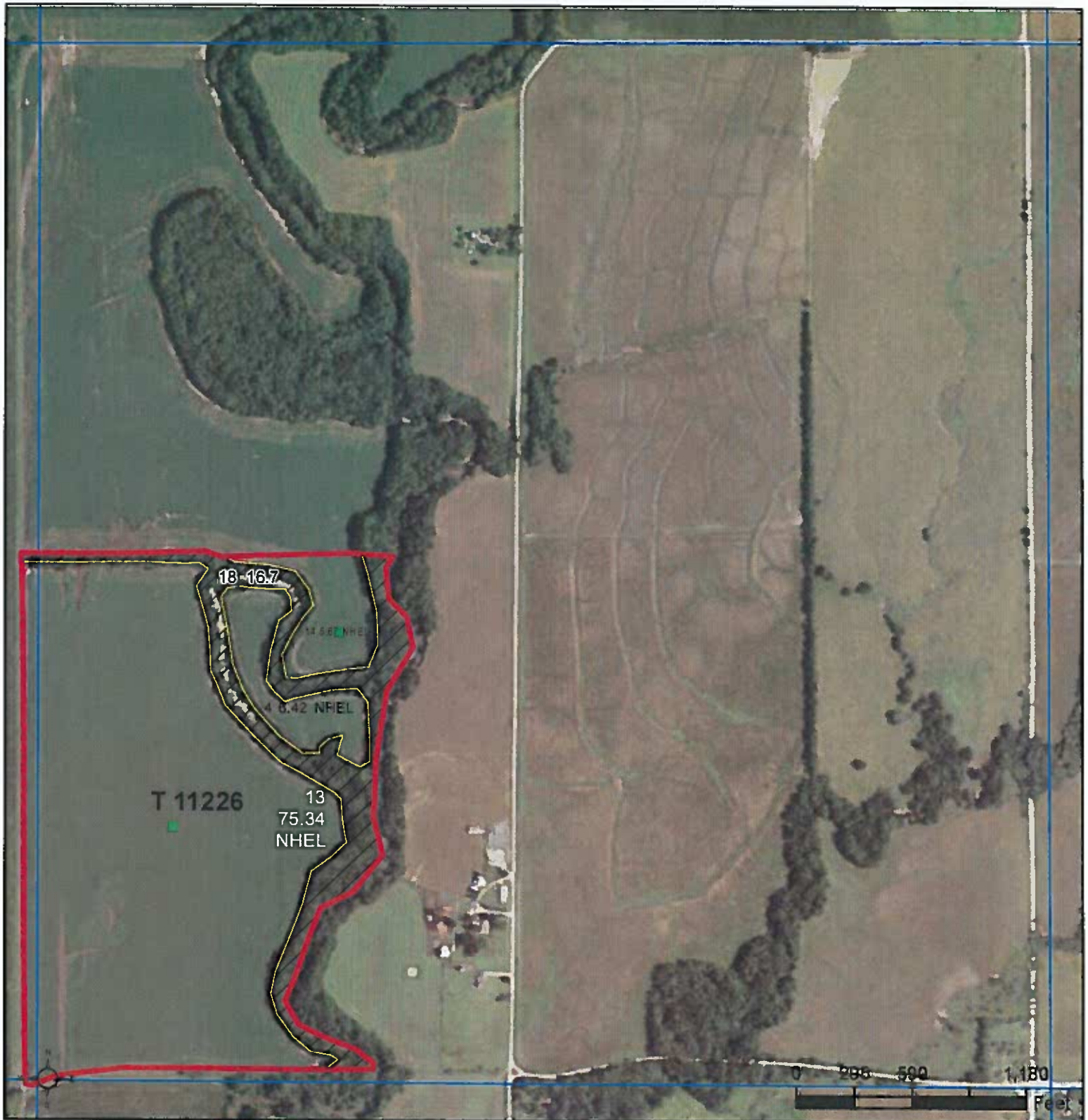
Displayed over 2015 NAIP

United States Department of Agriculture (USDA) Farm Service Agency (FSA) maps are for FSA Program administration only. This map does not represent a legal survey or reflect actual ownership; rather it depicts the information provided directly from the producer and/or National Agricultural Imagery Program (NAIP) imagery. The producer accepts the data 'as is' and assumes all risks associated with its use. USDA-FSA assumes no responsibility for actual or consequential damage incurred as a result of any user's reliance on this data outside FSA Programs. Wetland identifiers do not represent the size, shape, or specific determination of the area. Refer to your original determination (CPA-026 and attached maps) for exact boundaries and determinations or contact USDA Natural Resources Conservation Service (NRCS).



United States
Department of
Agriculture

Butler County, Kansas



Common Land Unit

- Non-Cropland
- Cropland

Wetland Determination Identifiers

- Restricted Use
- Limited Restrictions
- Exempt from Conservation Compliance Provisions

- Tract Boundary
- PLSS

Unless noted on field:

- | | |
|-----------------------------|----------------------|
| 1/ All Wheat HRW, NI, GR | 5/ Grass NAG, NI, FG |
| 2/ All Sorghum GRS, NI, GR | 6/ Grass NAG, NI, LS |
| 3/ All Corn YEL, NI, GR | 7/ Grass FTA, NI, FG |
| 4/ All Soybeans COM, NI, GR | 8/ Grass FTA, NI, LS |

2018 Program Year

Map Created December 02, 2017

Farm 7675

Tract 11226

19-24-4

Tract Cropland Total: 87.43 acres

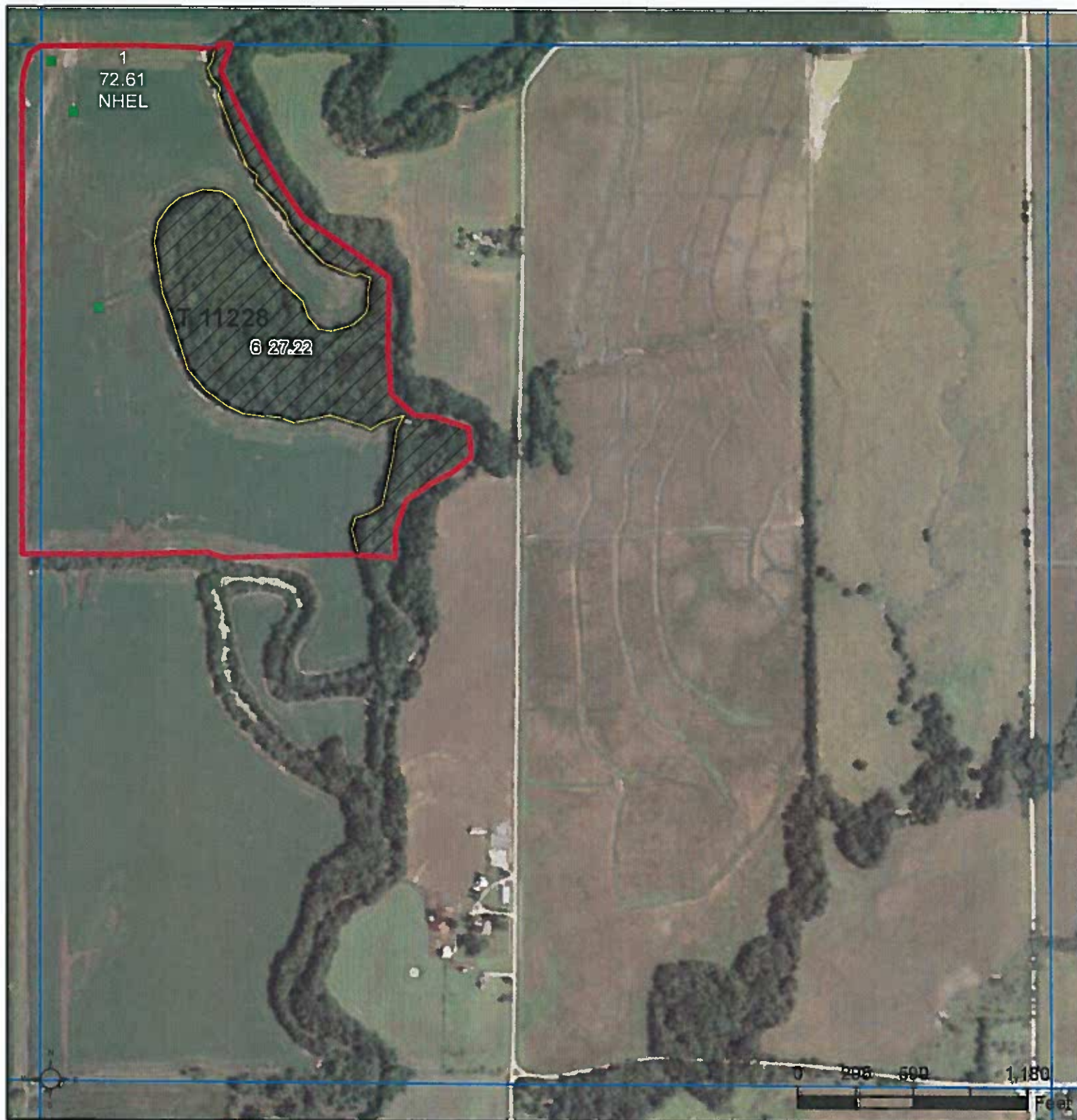
Displayed over 2015 NAIP

United States Department of Agriculture (USDA) Farm Service Agency (FSA) maps are for FSA Program administration only. This map does not represent a legal survey or reflect actual ownership; rather it depicts the information provided directly from the producer and/or National Agricultural Imagery Program (NAIP) imagery. The producer accepts the data 'as is' and assumes all risks associated with its use. USDA-FSA assumes no responsibility for actual or consequential damage incurred as a result of any user's reliance on this data outside FSA Programs. Wetland identifiers do not represent the size, shape, or specific determination of the area. Refer to your original determination (CPA-026 and attached maps) for exact boundaries and determinations or contact USDA Natural Resources Conservation Service (NRCS).



United States
Department of
Agriculture

Butler County, Kansas



Common Land Unit

Tract Boundary
PLSS

Non-Cropland
Cropland

Wetland Determination Identifiers

- Restricted Use
- Limited Restrictions
- Exempt from Conservation Compliance Provisions

Unless noted on field:

- | | |
|-----------------------------|----------------------|
| 1/ All Wheat HRW, NI, GR | 5/ Grass NAG, NI, FG |
| 2/ All Sorghum GRS, NI, GR | 6/ Grass NAG, NI, LS |
| 3/ All Corn YEL, NI, GR | 7/ Grass FTA, NI, FG |
| 4/ All Soybeans COM, NI, GR | 8/ Grass FTA, NI, LS |

2018 Program Year

Map Created December 02, 2017

Farm 7675

Tract 11228

19-24-4

Tract Cropland Total: 72.61 acres

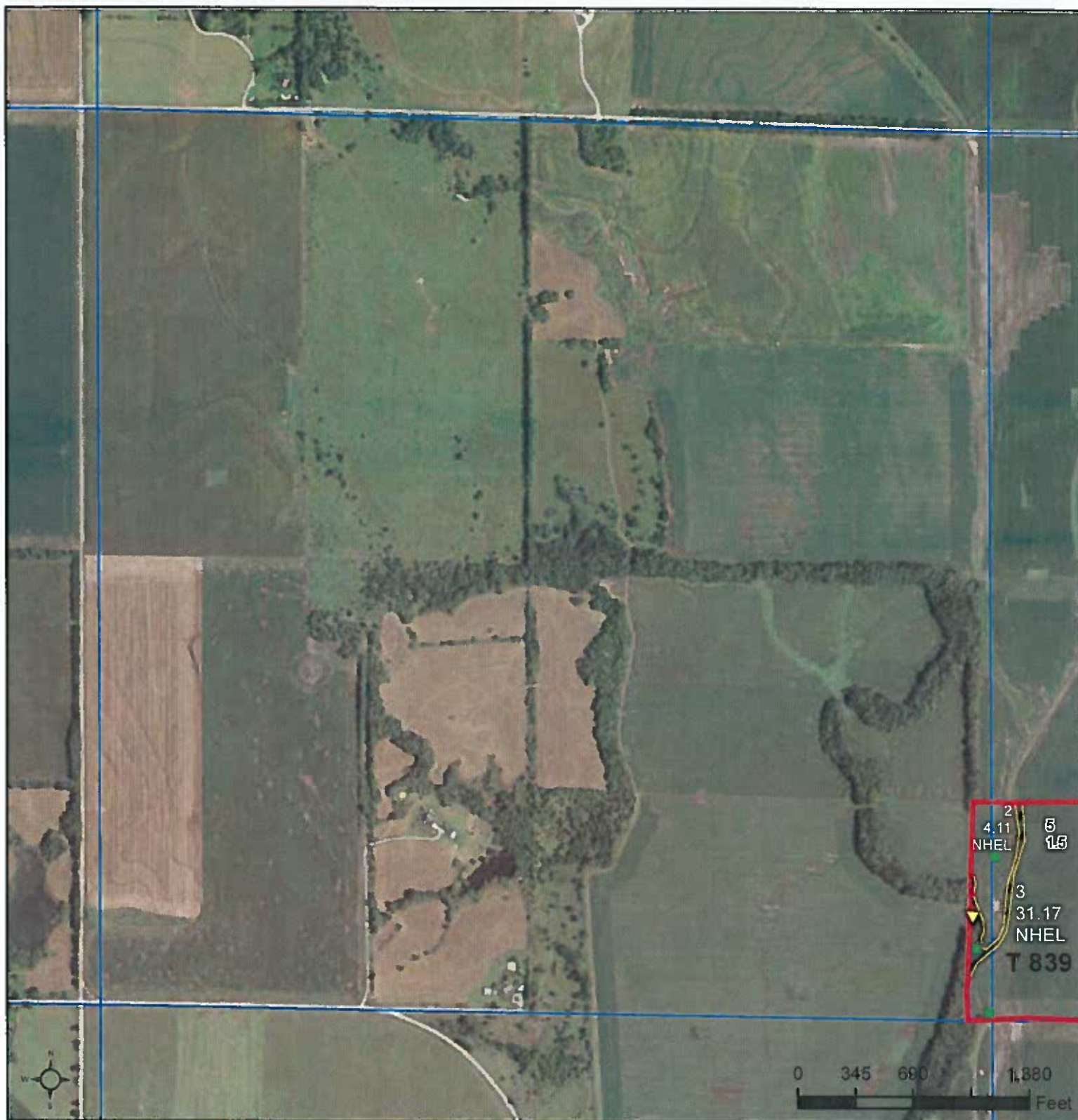
Displayed over 2015 NAIP

United States Department of Agriculture (USDA) Farm Service Agency (FSA) maps are for FSA Program administration only. This map does not represent a legal survey or reflect actual ownership; rather it depicts the information provided directly from the producer and/or National Agricultural Imagery Program (NAIP) imagery. The producer accepts the data 'as is' and assumes all risks associated with its use. USDA-FSA assumes no responsibility for actual or consequential damage incurred as a result of any user's reliance on this data outside FSA Programs. Wetland identifiers do not represent the size, shape, or specific determination of the area. Refer to your original determination (CPA-026 and attached maps) for exact boundaries and determinations or contact USDA Natural Resources Conservation Service (NRCS).



United States
Department of
Agriculture

Butler County, Kansas



Common Land Unit

Tract Boundary
PLSS

Non-Cropland
Cropland

Wetland Determination Identifiers

- Restricted Use
- Limited Restrictions
- Exempt from Conservation Compliance Provisions

Unless noted on field:

- | | |
|-----------------------------|----------------------|
| 1/ All Wheat HRW, NI, GR | 5/ Grass NAG, NI, FG |
| 2/ All Sorghum GRS, NI, GR | 6/ Grass NAG, NI, LS |
| 3/ All Corn YEL, NI, GR | 7/ Grass FTA, NI, FG |
| 4/ All Soybeans COM, NI, GR | 8/ Grass FTA, NI, LS |

2018 Program Year

Map Created December 02, 2017

Farm 7746

Tract 839

13-24-3

Tract Cropland Total: 35.28 acres

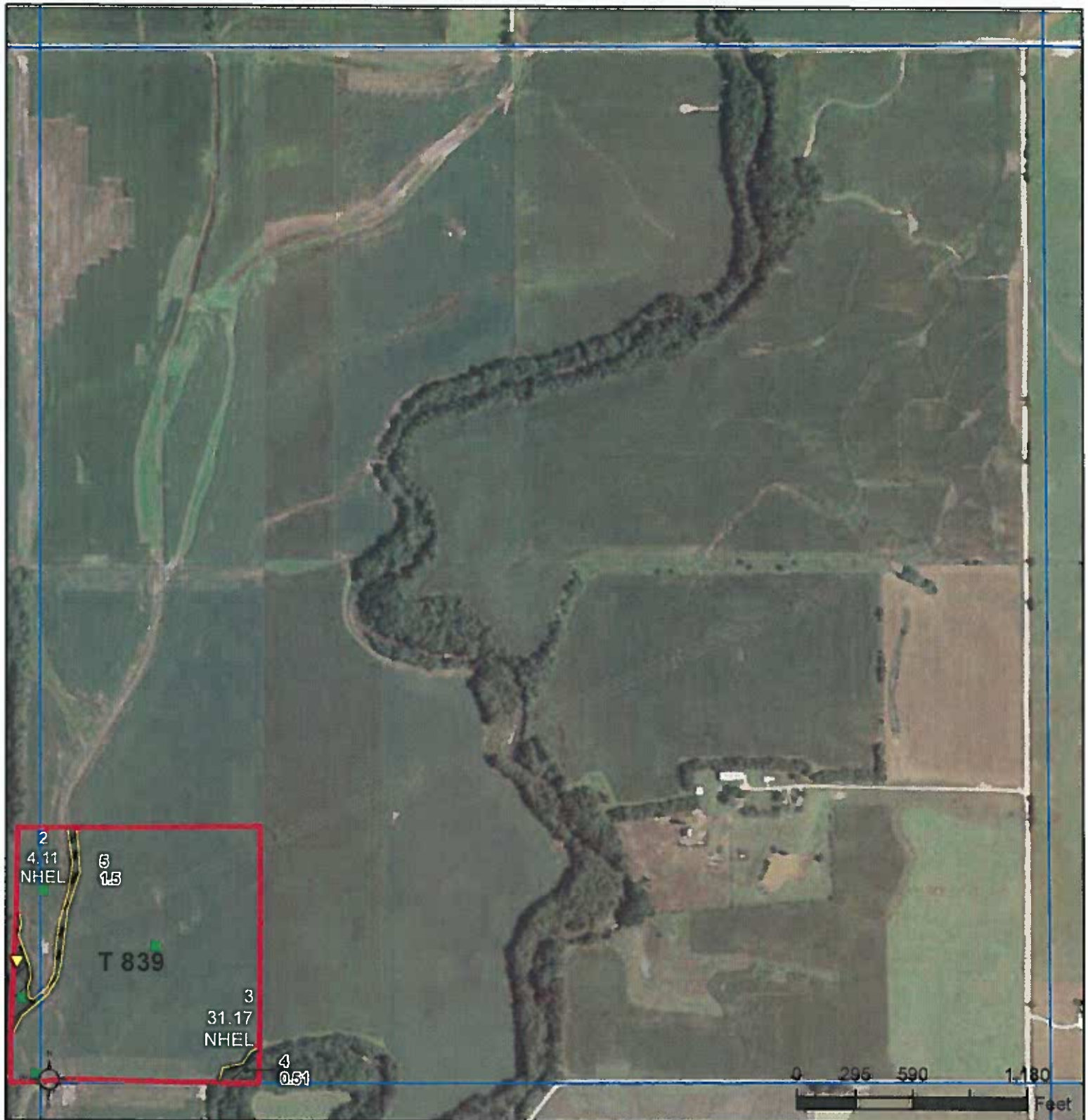
Displayed over 2015 NAIP

United States Department of Agriculture (USDA) Farm Service Agency (FSA) maps are for FSA Program administration only. This map does not represent a legal survey or reflect actual ownership; rather it depicts the information provided directly from the producer and/or National Agricultural Imagery Program (NAIP) imagery. The producer accepts the data 'as is' and assumes all risks associated with its use. USDA-FSA assumes no responsibility for actual or consequential damage incurred as a result of any user's reliance on this data outside FSA Programs. Wetland identifiers do not represent the size, shape, or specific determination of the area. Refer to your original determination (CPA-026 and attached maps) for exact boundaries and determinations or contact USDA Natural Resources Conservation Service (NRCS).



United States
Department of
Agriculture

Butler County, Kansas



Common Land Unit

Non-Cropland
Cropland

Wetland Determination Identifiers

- Restricted Use
- Limited Restrictions
- Exempt from Conservation Compliance Provisions

Tract Boundary
PLSS

Unless noted on field:

- | | |
|-----------------------------|----------------------|
| 1/ All Wheat HRW, NI, GR | 5/ Grass NAG, NI, FG |
| 2/ All Sorghum GRS, NI, GR | 6/ Grass NAG, NI, LS |
| 3/ All Corn YEL, NI, GR | 7/ Grass FTA, NI, FG |
| 4/ All Soybeans COM, NI, GR | 8/ Grass FTA, NI, LS |

2018 Program Year

Map Created December 02, 2017

Farm 7746

Tract 839

18-24-4

Tract Cropland Total: 35.28 acres

Displayed over 2015 NAIP

United States Department of Agriculture (USDA) Farm Service Agency (FSA) maps are for FSA Program administration only. This map does not represent a legal survey or reflect actual ownership; rather it depicts the information provided directly from the producer and/or National Agricultural Imagery Program (NAIP) imagery. The producer accepts the data 'as is' and assumes all risks associated with its use. USDA-FSA assumes no responsibility for actual or consequential damage incurred as a result of any user's reliance on this data outside FSA Programs. Wetland identifiers do not represent the size, shape, or specific determination of the area. Refer to your original determination (CPA-026 and attached maps) for exact boundaries and determinations or contact USDA Natural Resources Conservation Service (NRCS).