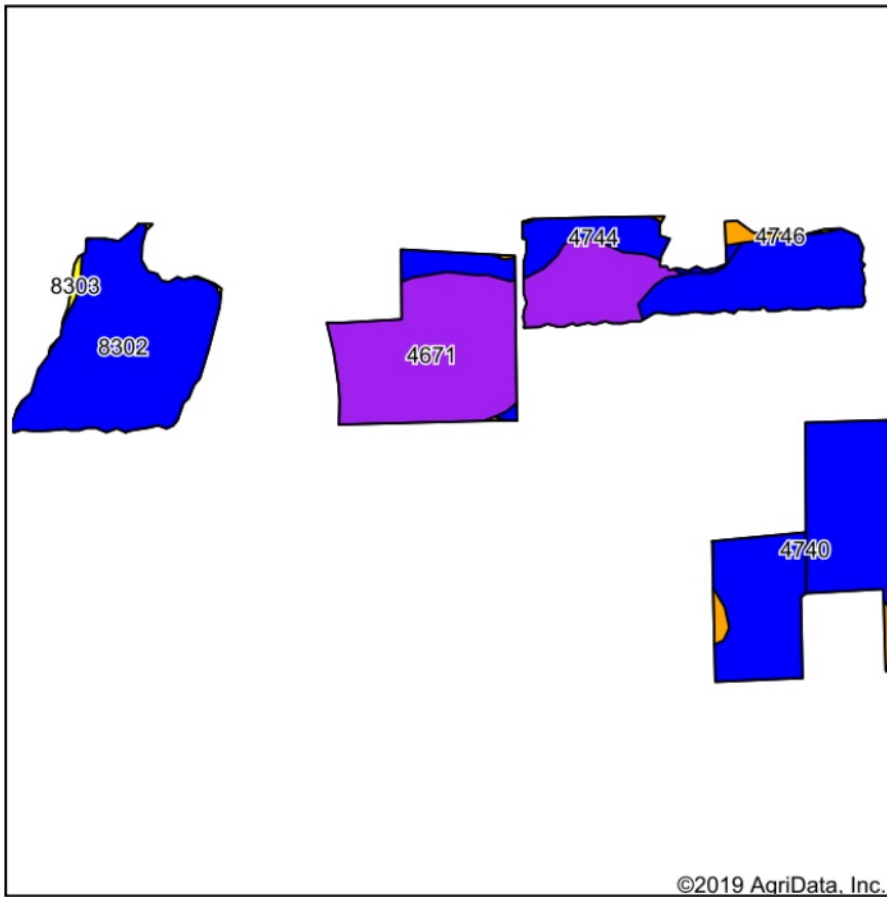
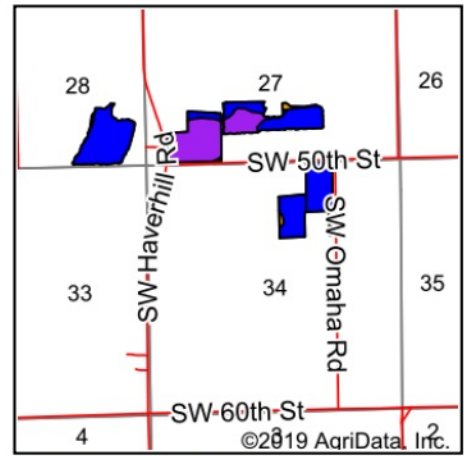


Soils Map



Soils data provided by USDA and NRCS.



State: **Kansas**
 County: **Butler**
 Location: **34-26S-5E**
 Township: **El Dorado**
 Acres: **94.7**
 Date: **2/5/2020**



Area Symbol: KS015, Soil Area Version: 17							
Code	Soil Description	Acres	Percent of field	Non-Irr Class Legend	Non-Irr Class *c	Irr Class *c	*n NCCPI Soybeans
4740	Labette silty clay loam, 1 to 3 percent slopes	35.61	37.6%		Ile	Ile	40
4671	Irwin silty clay loam, 1 to 3 percent slopes	27.82	29.4%		IIIs	IIIs	57
8302	Verdigris silt loam, 0 to 1 percent slopes, occasionally flooded	22.43	23.7%		IIw		85
4744	Labette-Dwight complex, 0 to 3 percent slopes	6.73	7.1%		Ile	Ile	36
4746	Labette-Sogn silty clay loam, 0 to 8 percent slopes	1.71	1.8%		IVe	IIIe	28
8303	Verdigris soils, frequently flooded	0.40	0.4%		Vw		53
Weighted Average							*n 55.2

*n: The aggregation method is "Weighted Average using major components"

*c: Using Capabilities Class Dominant Condition Aggregation Method

Soils data provided by USDA and NRCS.