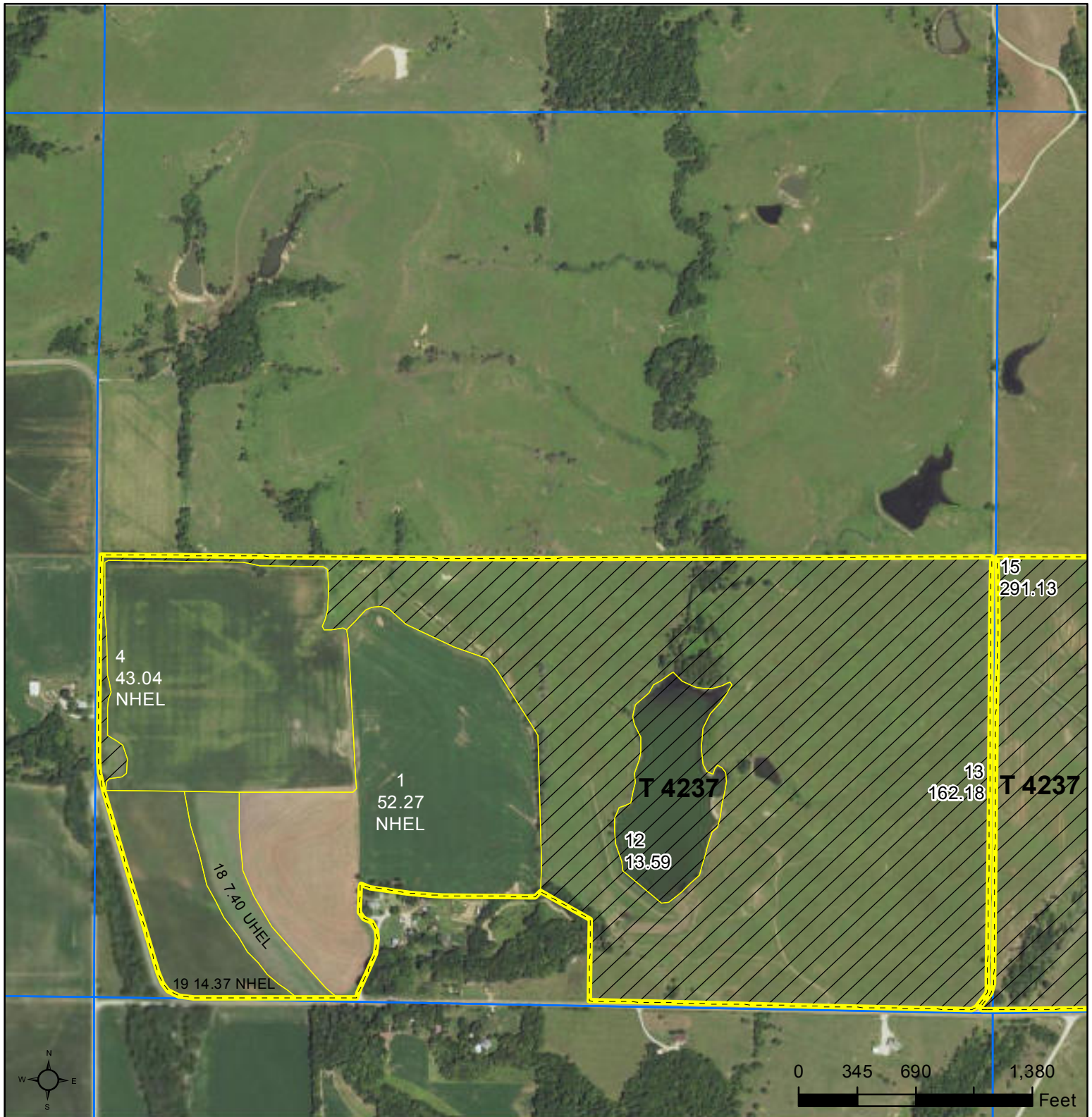




United States  
Department of  
Agriculture

## Greenwood County, Kansas



**Common Land Unit** Tract Boundary

Non-Cropland  
 Cropland

### Wetland Determination Identifiers

- Restricted Use
- Limited Restrictions
- Exempt from Conservation Compliance Provisions

Unless noted on field:

- |                             |                      |
|-----------------------------|----------------------|
| 1/ All Wheat HRW, NI, GR    | 5/ Grass NAG, NI, FG |
| 2/ All Sorghum GRS, NI, GR  | 6/ Grass NAG, NI, LS |
| 3/ All Corn YEL, NI, GR     | 7/ Grass FTA, NI, FG |
| 4/ All Soybeans COM, NI, GR | 8/ Grass FTA, NI, LS |

**2019 Program Year**

Map Created October 27, 2018

**Farm 4319**

**Tract 4237**

**23-22-12**

Displayed over 2017 NAIP

**Tract Cropland Total: 117.08 acres**

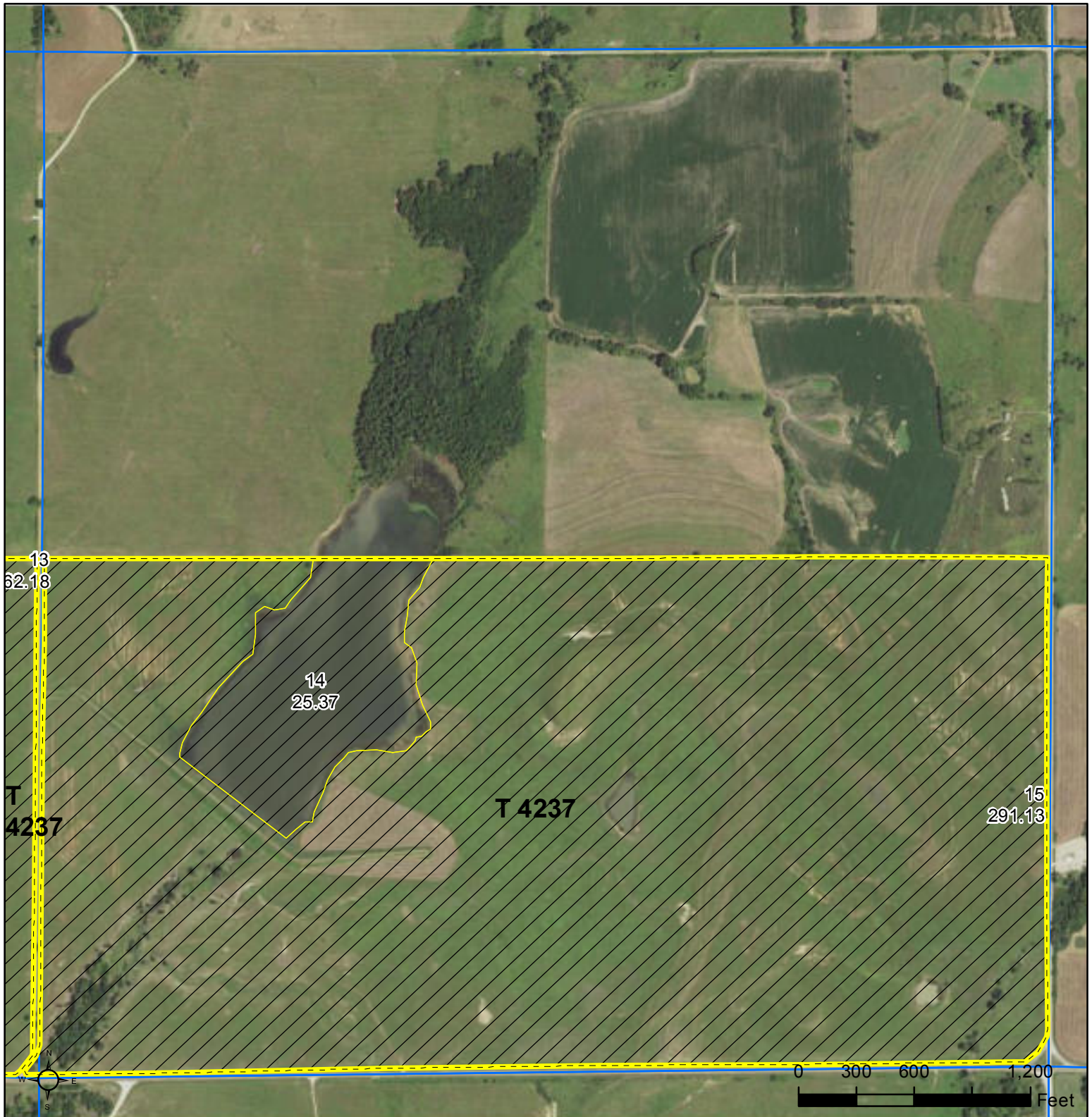
United States Department of Agriculture (USDA) Farm Service Agency (FSA) maps are for FSA Program administration only. This map does not represent a legal survey or reflect actual ownership; rather it depicts the information provided directly from the producer and/or National Agricultural Imagery Program (NAIP) imagery. The producer accepts the data 'as is' and assumes all risks associated with its use. USDA-FSA assumes no responsibility for actual or consequential damage incurred as a result of any user's reliance on this data outside FSA Programs. Wetland identifiers do not represent the size, shape, or specific determination of the area. Refer to your original determination (CPA-026 and attached maps) for exact boundaries and determinations or contact USDA Natural Resources Conservation Service (NRCS).





United States  
Department of  
Agriculture

## Greenwood County, Kansas



**Common Land Unit**   PLSS

Non-Cropland  
 Tract Boundary

**Wetland Determination Identifiers**

- Restricted Use
- ▼ Limited Restrictions
- Exempt from Conservation Compliance Provisions

Unless noted on field:

- |                             |                      |
|-----------------------------|----------------------|
| 1/ All Wheat HRW, NI, GR    | 5/ Grass NAG, NI, FG |
| 2/ All Sorghum GRS, NI, GR  | 6/ Grass NAG, NI, LS |
| 3/ All Corn YEL, NI, GR     | 7/ Grass FTA, NI, FG |
| 4/ All Soybeans COM, NI, GR | 8/ Grass FTA, NI, LS |

**2019 Program Year**

Map Created October 27, 2018

**Farm 4319**

**Tract 4237**

**Tract Cropland Total: 117.08 acres**

**24-22-12**

Displayed over 2017 NAIP

United States Department of Agriculture (USDA) Farm Service Agency (FSA) maps are for FSA Program administration only. This map does not represent a legal survey or reflect actual ownership; rather it depicts the information provided directly from the producer and/or National Agricultural Imagery Program (NAIP) imagery. The producer accepts the data 'as is' and assumes all risks associated with its use. USDA-FSA assumes no responsibility for actual or consequential damage incurred as a result of any user's reliance on this data outside FSA Programs. Wetland identifiers do not represent the size, shape, or specific determination of the area. Refer to your original determination (CPA-026 and attached maps) for exact boundaries and determinations or contact USDA Natural Resources Conservation Service (NRCS).