

Kansas  
Sedgwick

U.S. Department of Agriculture  
Farm Service Agency

FARM: 503  
Prepared: 8/30/17 3:54 PM  
Crop Year: 2017  
Page: 1 of 1

Report ID: FSA-156EZ

Abbreviated 156 Farm Record

DISCLAIMER: This is data extracted from the web farm database. Because of potential messaging failures in MIDAS, this data is not guaranteed to be an accurate and complete representation of data contained in the MIDAS system, which is the system of record for Farm Records.

Operator Name Farm Identifier Recon Number

Farms Associated with Operator:

CRP Contract Number(s): None

Farmland	Cropland	DCP Cropland	WBP	WRP/EWP	CRP Cropland	GRP	Farm Status	Number of Tracts
77.41	77.41	77.41	0.0	0.0	0.0	0.0	Active	1
State Conservation	Other Conservation	Effective DCP Cropland	Double Cropped	MPL/FWP				
0.0	0.0	77.41	0.0	0.0				

ARC/PLC

ARC-IC  
NONE

ARC-CO  
WHEAT, SOYBN

PLC  
NONE

PLC-Default  
NONE

Crop	Base Acreage	CTAP Tran Yield	PLC Yield	CCC-505 CRP Reduction
WHEAT	19.15		29	0.0
SOYBEANS	57.65		25	0.0
<b>Total Base Acres:</b>	76.8			

Tract Number: 3567 Description: Q-3 E1/2SE1/4 14-25-1E

BIA Range Unit Number:

HEL Status: NHEL: no agricultural commodity planted on undetermined fields

Wetland Status: Tract does not contain a wetland

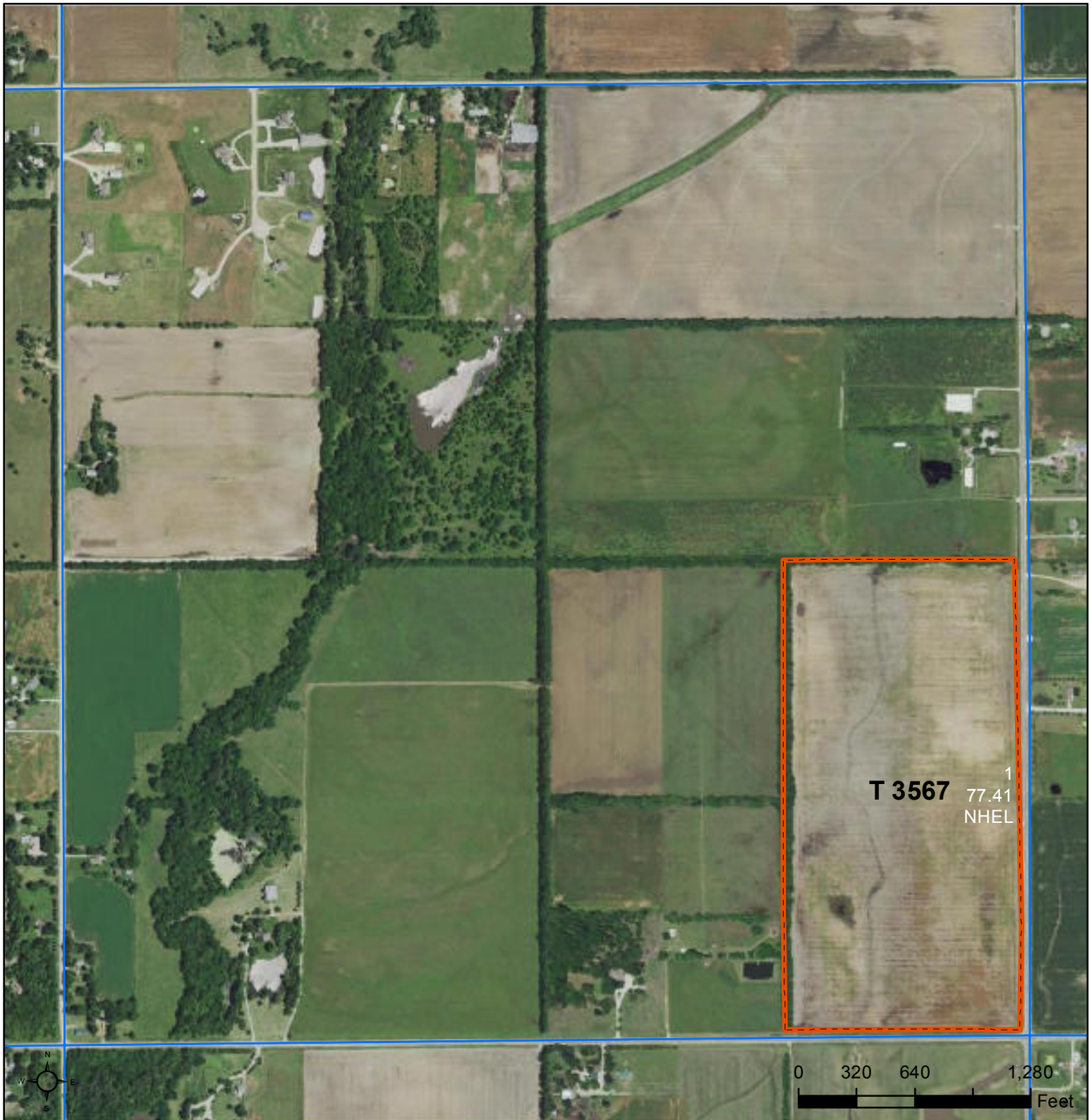
WL Violations: None

Farmland	Cropland	DCP Cropland	WBP	WRP/EWP	CRP Cropland	GRP
77.41	77.41	77.41	0.0	0.0	0.0	0.0
State Conservation	Other Conservation	Effective DCP Cropland	Double Cropped	MPL/FWP		
0.0	0.0	77.41	0.0	0.0		

Crop	Base Acreage	CTAP Tran Yield	PLC Yield	CCC-505 CRP Reduction
WHEAT	19.15		29	0.0
SOYBEANS	57.65		25	0.0
<b>Total Base Acres:</b>	76.8			

Owners: GRACIA E LEVERING REV TR

Other Producers: None



**Common Land Unit**  PLSS

- Cropland
- Tract Boundary

**Wetland Determination Identifiers**

- Restricted Use
- ▼ Limited Restrictions
- Exempt from Conservation Compliance Provisions

Tract Cropland Total: 77.41 acres

Displayed over 2015 NAIP

2017 Program Year

Map Created August 09, 2016

Farm 503

Tract 3567

14-25-1E

United States Department of Agriculture (USDA) Farm Service Agency (FSA) maps are for FSA Program administration only. This map does not represent a legal survey or reflect actual ownership; rather it depicts the information provided directly from the producer and/or National Agricultural Imagery Program (NAIP) imagery. The producer accepts the data 'as is' and assumes all risks associated with its use. USDA-FSA assumes no responsibility for actual or consequential damage incurred as a result of any user's reliance on this data outside FSA Programs. Wetland identifiers do not represent the size, shape, or specific determination of the area. Refer to your original determination (CPA-026 and attached maps) for exact boundaries and determinations or contact USDA Natural Resources Conservation Service (NRCS).