



**Wetland Determination Identifiers**

- Restricted Use
- ▼ Limited Restrictions
- Exempt from Conservation Compliance Provisions

- Unless noted on field:
- |                             |                      |
|-----------------------------|----------------------|
| 1/ All Wheat HRW, NI, GR    | 5/ Grass NAG, NI, FG |
| 2/ All Sorghum GRS, NI, GR  | 6/ Grass NAG, NI, LS |
| 3/ All Corn YEL, IR, GR     | 7/ Grass SMO, NI, FG |
| 4/ All Soybeans COM, IR, GR | 8/ Grass SMO, NI, LS |

**Tract Cropland Total: 500.36 acres**

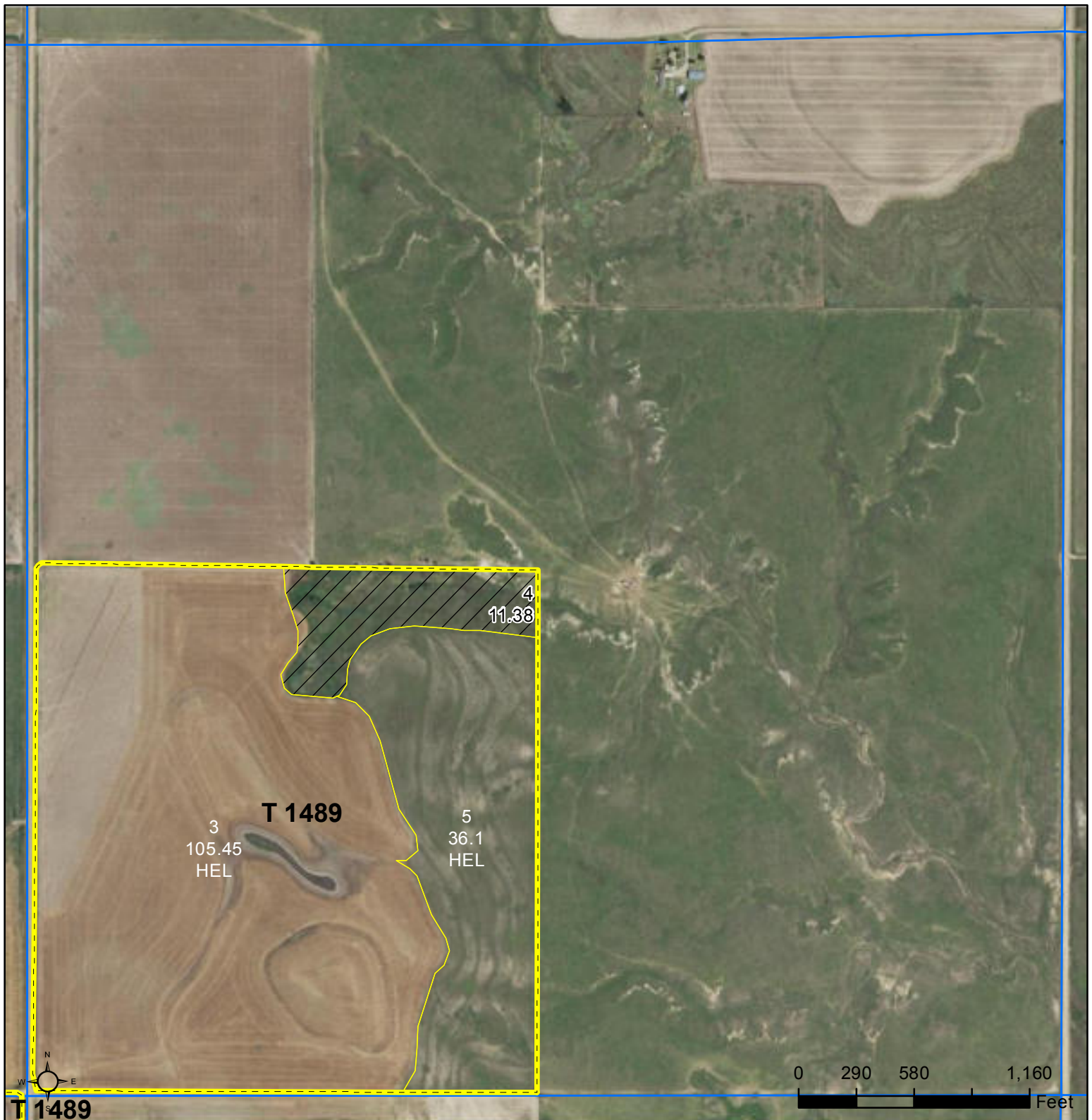
**2019 Program Year**

Map Created October 19, 2018

**Farm 1105**  
**Tract 1489**  
**13-32-27**

Displayed over 2017 NAIP

United States Department of Agriculture (USDA) Farm Service Agency (FSA) maps are for FSA Program administration only. This map does not represent a legal survey or reflect actual ownership; rather it depicts the information provided directly from the producer and/or National Agricultural Imagery Program (NAIP) imagery. The producer accepts the data 'as is' and assumes all risks associated with its use. USDA-FSA assumes no responsibility for actual or consequential damage incurred as a result of any user's reliance on this data outside FSA Programs. Wetland identifiers do not represent the size, shape, or specific determination of the area. Refer to your original determination (CPA-026 and attached maps) for exact boundaries and determinations or contact USDA Natural Resources Conservation Service (NRCS).



T 1489

Unless noted on field:

- |                             |                      |
|-----------------------------|----------------------|
| 1/ All Wheat HRW, NI, GR    | 5/ Grass NAG, NI, FG |
| 2/ All Sorghum GRS, NI, GR  | 6/ Grass NAG, NI, LS |
| 3/ All Corn YEL, IR, GR     | 7/ Grass SMO, NI, FG |
| 4/ All Soybeans COM, IR, GR | 8/ Grass SMO, NI, LS |

2019 Program Year

Map Created October 19, 2018

Farm 1105

Tract 1489

18-32-26

Displayed over 2017 NAIP

**Wetland Determination Identifiers**

- Restricted Use
- ▼ Limited Restrictions
- Exempt from Conservation Compliance Provisions

Tract Cropland Total: 500.36 acres

United States Department of Agriculture (USDA) Farm Service Agency (FSA) maps are for FSA Program administration only. This map does not represent a legal survey or reflect actual ownership; rather it depicts the information provided directly from the producer and/or National Agricultural Imagery Program (NAIP) imagery. The producer accepts the data 'as is' and assumes all risks associated with its use. USDA-FSA assumes no responsibility for actual or consequential damage incurred as a result of any user's reliance on this data outside FSA Programs. Wetland identifiers do not represent the size, shape, or specific determination of the area. Refer to your original determination (CPA-026 and attached maps) for exact boundaries and determinations or contact USDA Natural Resources Conservation Service (NRCS).



Unless noted on field:

- |                             |                      |
|-----------------------------|----------------------|
| 1/ All Wheat HRW, NI, GR    | 5/ Grass NAG, NI, FG |
| 2/ All Sorghum GRS, NI, GR  | 6/ Grass NAG, NI, LS |
| 3/ All Corn YEL, IR, GR     | 7/ Grass SMO, NI, FG |
| 4/ All Soybeans COM, IR, GR | 8/ Grass SMO, NI, LS |

**2019 Program Year**

Map Created October 19, 2018

**Farm 1105**

**Tract 1489**

**24-32-27**

Displayed over 2017 NAIP

**Wetland Determination Identifiers**

- Restricted Use
- ▼ Limited Restrictions
- Exempt from Conservation Compliance Provisions

**Tract Cropland Total: 500.36 acres**

United States Department of Agriculture (USDA) Farm Service Agency (FSA) maps are for FSA Program administration only. This map does not represent a legal survey or reflect actual ownership; rather it depicts the information provided directly from the producer and/or National Agricultural Imagery Program (NAIP) imagery. The producer accepts the data 'as is' and assumes all risks associated with its use. USDA-FSA assumes no responsibility for actual or consequential damage incurred as a result of any user's reliance on this data outside FSA Programs. Wetland identifiers do not represent the size, shape, or specific determination of the area. Refer to your original determination (CPA-026 and attached maps) for exact boundaries and determinations or contact USDA Natural Resources Conservation Service (NRCS).



Unless noted on field:

- |                             |                      |
|-----------------------------|----------------------|
| 1/ All Wheat HRW, NI, GR    | 5/ Grass NAG, NI, FG |
| 2/ All Sorghum GRS, NI, GR  | 6/ Grass NAG, NI, LS |
| 3/ All Corn YEL, IR, GR     | 7/ Grass SMO, NI, FG |
| 4/ All Soybeans COM, IR, GR | 8/ Grass SMO, NI, LS |

2019 Program Year

Map Created October 19, 2018

**Farm 1105**  
**Tract 1615**  
**24-32-27**

Displayed over 2017 NAIP

**Wetland Determination Identifiers**

- Restricted Use
- ▼ Limited Restrictions
- Exempt from Conservation Compliance Provisions

**Tract Cropland Total: 155.86 acres**

United States Department of Agriculture (USDA) Farm Service Agency (FSA) maps are for FSA Program administration only. This map does not represent a legal survey or reflect actual ownership; rather it depicts the information provided directly from the producer and/or National Agricultural Imagery Program (NAIP) imagery. The producer accepts the data 'as is' and assumes all risks associated with its use. USDA-FSA assumes no responsibility for actual or consequential damage incurred as a result of any user's reliance on this data outside FSA Programs. Wetland identifiers do not represent the size, shape, or specific determination of the area. Refer to your original determination (CPA-026 and attached maps) for exact boundaries and determinations or contact USDA Natural Resources Conservation Service (NRCS).



Unless noted on field:

- |                             |                      |
|-----------------------------|----------------------|
| 1/ All Wheat HRW, NI, GR    | 5/ Grass NAG, NI, FG |
| 2/ All Sorghum GRS, NI, GR  | 6/ Grass NAG, NI, LS |
| 3/ All Corn YEL, IR, GR     | 7/ Grass SMO, NI, FG |
| 4/ All Soybeans COM, IR, GR | 8/ Grass SMO, NI, LS |

**2019 Program Year**

Map Created October 19, 2018

**Farm 1105**

**Tract 1616**

**23-32-27**

Displayed over 2017 NAIP

**Wetland Determination Identifiers**

- Restricted Use
- ▼ Limited Restrictions
- Exempt from Conservation Compliance Provisions

**Tract Cropland Total: 313.76 acres**

United States Department of Agriculture (USDA) Farm Service Agency (FSA) maps are for FSA Program administration only. This map does not represent a legal survey or reflect actual ownership; rather it depicts the information provided directly from the producer and/or National Agricultural Imagery Program (NAIP) imagery. The producer accepts the data 'as is' and assumes all risks associated with its use. USDA-FSA assumes no responsibility for actual or consequential damage incurred as a result of any user's reliance on this data outside FSA Programs. Wetland identifiers do not represent the size, shape, or specific determination of the area. Refer to your original determination (CPA-026 and attached maps) for exact boundaries and determinations or contact USDA Natural Resources Conservation Service (NRCS).