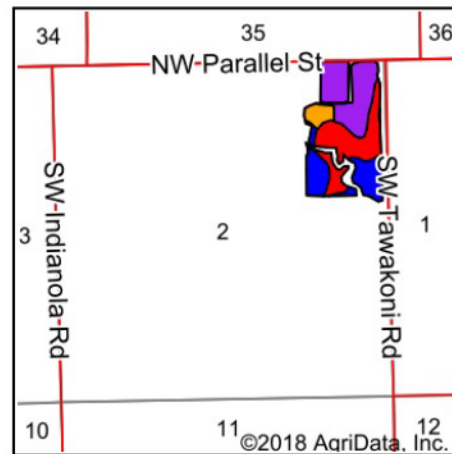
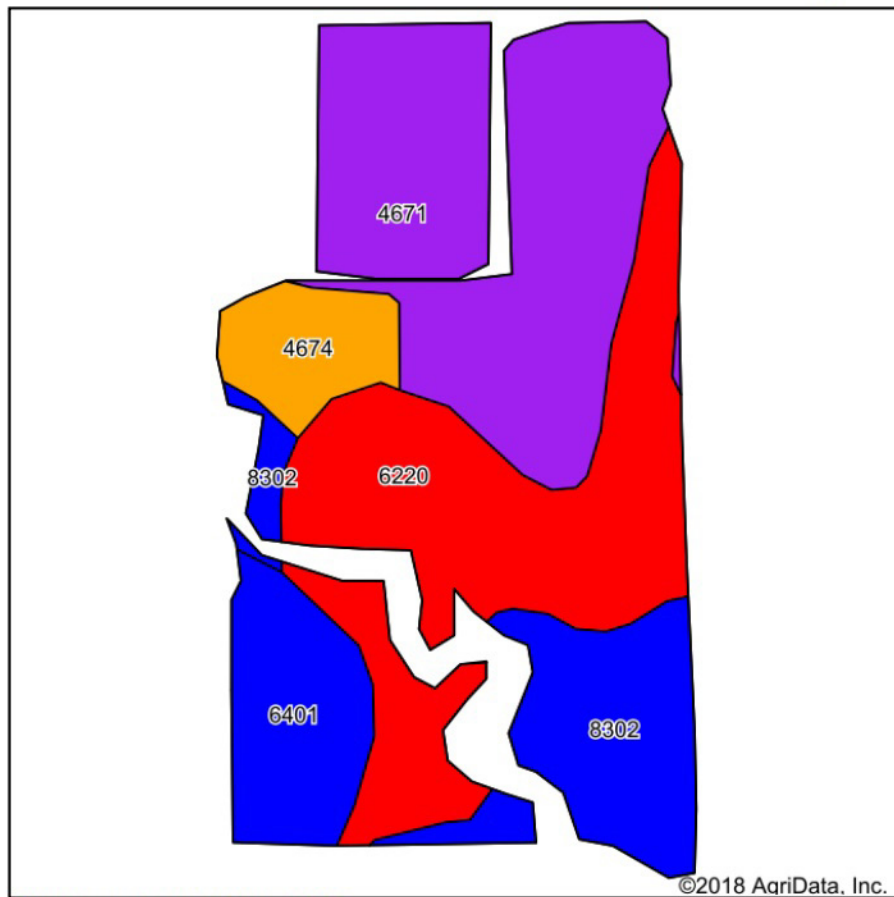


Soils Map



State: **Kansas**
 County: **Butler**
 Location: **2-26S-3E**
 Township: **Benton**
 Acres: **49.57**
 Date: **1/2/2019**



Area Symbol: KS015, Soil Area Version: 16

Code	Soil Description	Acres	Percent of field	Non-Irr Class Legend	Non-Irr Class *c	Irr Class *c	*n NCCPI Soybeans
4671	Irwin silty clay loam, 1 to 3 percent slopes	18.08	36.5%		IIIls	IIIls	57
6220	Brewer silty clay loam, rarely flooded	15.93	32.1%		Iw	Iw	62
8302	Verdigris silt loam, 0 to 1 percent slopes, occasionally flooded	7.38	14.9%		IIw		85
6401	Norge silt loam, 1 to 3 percent slopes	5.11	10.3%		Ile	Ile	80
4674	Irwin silty clay loam, 3 to 7 percent slopes, eroded	3.07	6.2%		IVe	IVe	47
Weighted Average							*n 64.5

*n: The aggregation method is "Weighted Average using major components"

*c: Using Capabilities Class Dominant Condition Aggregation Method

Soils data provided by USDA and NRCS.