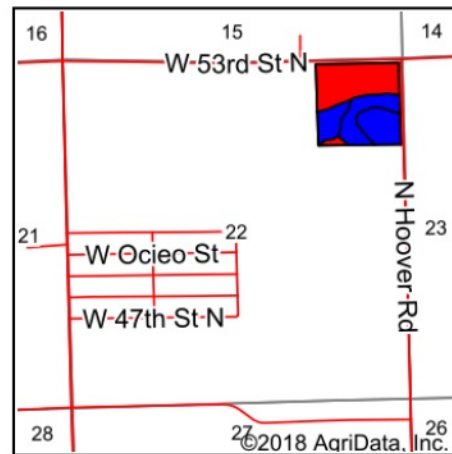
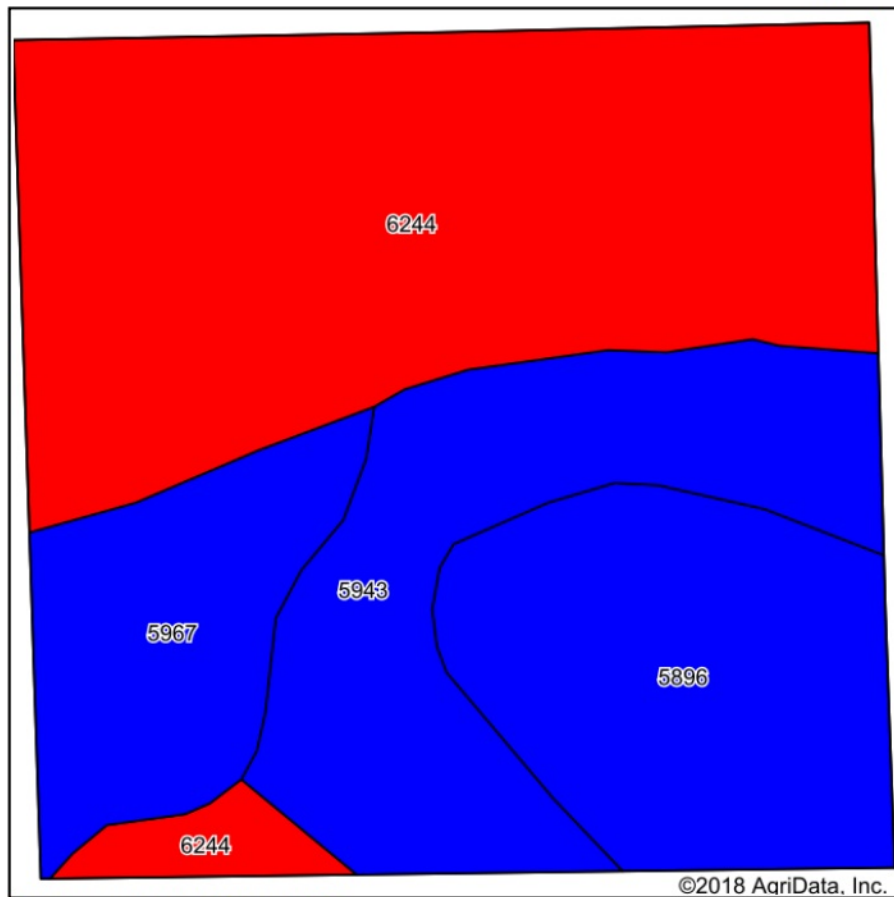


Soils Map



State: **Kansas**
 County: **Sedgwick**
 Location: **22-26S-1W**
 Township: **Park**
 Acres: **37.47**
 Date: **5/8/2018**



Area Symbol: KS173, Soil Area Version: 13

Code	Soil Description	Acres	Percent of field	Non-Irr Class Legend	Non-Irr Class *c	Irr Class *c	NCCPI Overall
6244	Elandco silt loam, rarely flooded	17.48	46.7%		le	le	76
5943	Saltcreek and Naron fine sandy loams, 0 to 1 percent slopes	7.96	21.2%		llc	I	54
5896	Nalim-Shellabarger sandy loams, 0 to 1 percent slopes	7.44	19.9%		lle	lle	59
5967	Tabler silty clay loam, 0 to 1 percent slopes	4.59	12.2%		lls	lls	56
Weighted Average							65.5

*c: Using Capabilities Class Dominant Condition Aggregation Method

Soils data provided by USDA and NRCS.