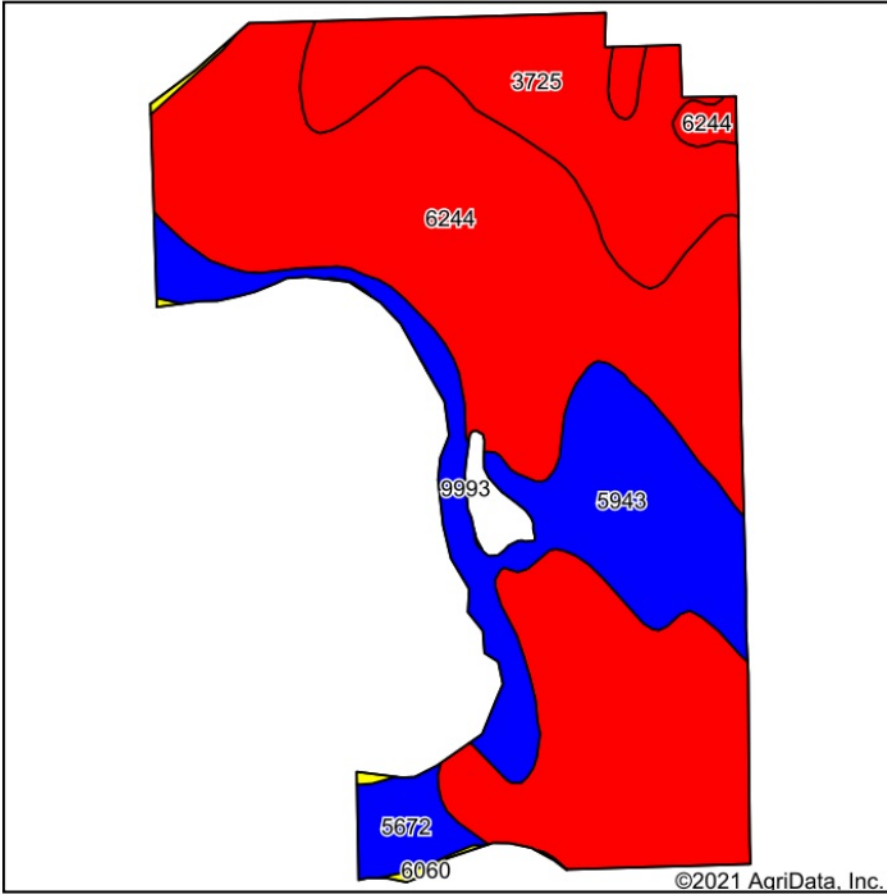
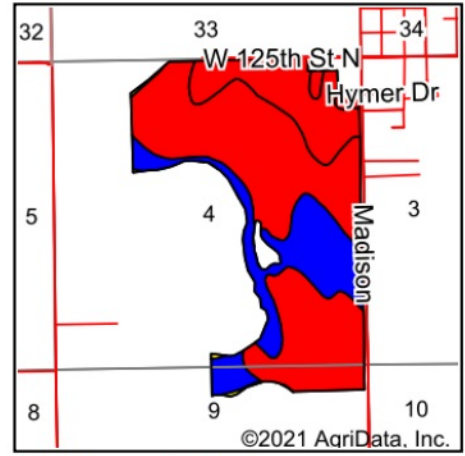


Soils Map



Soils data provided by USDA and NRCS.



State: **Kansas**
 County: **Sedgwick**
 Location: **4-25S-1W**
 Township: **Valley Center**
 Acres: **326.95**
 Date: **9/27/2021**



Area Symbol: KS173, Soil Area Version: 16

Code	Soil Description	Acres	Percent of field	Non-Irr Class Legend	Non-Irr Class *c	Irr Class *c	*n NCCPI Soybeans	
6244	Elandco silt loam, rarely flooded	200.88	61.4%		Ie	Ie	75	
5943	Saltcreek and Naron fine sandy loams, 0 to 1 percent slopes	62.16	19.0%		IIc	Iw	57	
3725	Detroit silty clay loam, rarely flooded	53.15	16.3%		Iw	Iw	65	
5672	Waldeck sandy loam, occasionally flooded	9.17	2.8%		Ile	Ile	47	
6060	Lincoln soils, frequently flooded	1.53	0.5%		VIw		21	
9993	Pits	0.06	0.0%					
Weighted Average								*n 68.9

*n: The aggregation method is "Weighted Average using all components"

*c: Using Capabilities Class Dominant Condition Aggregation Method